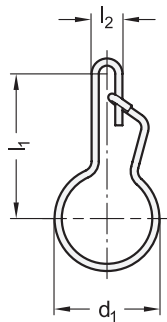
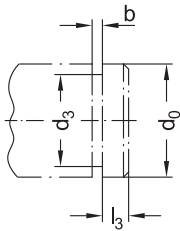


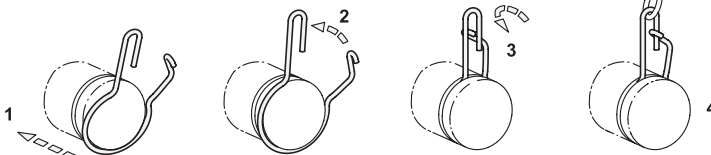
Notch for retaining ring



**2** Type

**S** Safety retaining ring

Assembly sequence



**1**

| $d_0$ Hub - $\emptyset$ | $d_1$ +0,5 | $d_2$ | $d_3$ $\pm 0,1$ | $b$ +0,2 | $l_1 \approx$ | $l_2$ $\pm 0,5$ | $l_3$ +0,3 |
|-------------------------|------------|-------|-----------------|----------|---------------|-----------------|------------|
| 12                      | 11,4       | 1,1   | 9,1             | 1,7      | 18,7          | 5               | 2,5        |
| 14                      | 13,2       | 1,1   | 10,9            | 1,8      | 19,8          | 5               | 3,2        |
| 15                      | 14,6       | 1,3   | 11,9            | 1,8      | 22,7          | 5,5             | 3,2        |
| 16                      | 15,6       | 1,3   | 12,9            | 1,8      | 23,3          | 5,5             | 3,2        |
| 17                      | 16,4       | 1,3   | 13,7            | 1,9      | 23,8          | 5,5             | 3,9        |
| 18                      | 17,6       | 1,4   | 14,7            | 1,9      | 26,5          | 6               | 3,9        |
| 19                      | 18,6       | 1,4   | 15,7            | 1,9      | 27,1          | 6               | 3,9        |
| 20                      | 19,6       | 1,4   | 16,7            | 1,9      | 27,7          | 6               | 3,9        |
| 21                      | 20,4       | 1,4   | 17,5            | 2        | 28,1          | 6               | 5,1        |
| 22                      | 21,8       | 1,6   | 18,5            | 2        | 31,1          | 7               | 5,1        |
| 23                      | 22,8       | 1,6   | 19,5            | 2        | 31,7          | 7               | 5,1        |
| 24                      | 23,8       | 1,6   | 20,5            | 2        | 32,2          | 7               | 5,1        |
| 26                      | 25,6       | 1,6   | 22,3            | 2,1      | 33,2          | 7               | 5,4        |

**Specification**

- Stainless Steel  
AISI 301
- *Stainless Steel characteristics* → Page 1489
- RoHS

**Information**

GN 111.6 Stainless Steel-Retaining rings can be revolving mounted on the cut-in onto shaft ends or handle. Star knobs, for example, can be secured against loss at the place of use with an additional retaining cable.

Service standard GN 111.7 → Page 1426 lists all standard parts that can be delivered with loss protection, i.e., with groove and retaining ring.

Star knobs GN 6336.13 with loss protection → Page 405 are delivered as a complete standard part consisting of a star knobs with notch and mounted retaining ring, with retaining cable or ball chain.

see also...

- *Stainless Steel-Retaining cables* GN 111.2 → Page 478
- *Ball chains* GN 111 / GN 111.5 → Page 876

How to order

**GN 111.6-12- S**

**1**  $d_0$

**2** Type