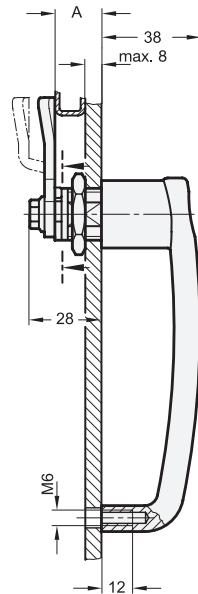
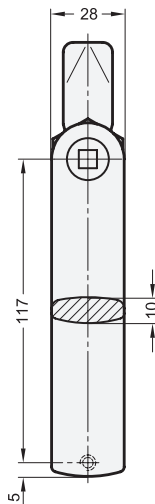


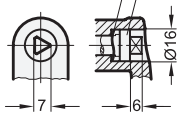
Limit of angle of rotation at 90°  
4 positions selectable



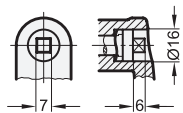
- 1 Type**  
Operation with  
**DK** triangular spindle (DK7)  
**VK7** square spindle A/F7  
**VK8** square spindle A/F8  
**SCH** slot  
**VDE** double bit

Corrugated spring washer

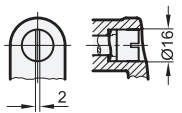
Operating bolt



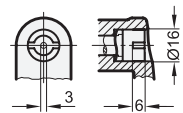
Type DK



Type VK7 / VK8



Type SCH



Type VDE

**2**

Latch distance A																					
4	6	8	10	13	14	16	18	20	22	24	26	28	30	32	34	36	38	40	42	45	50

**Specification**

- Cabinet U-handle  
Zinc die casting  
plastic coated  
black, RAL 9005, textured finish  
silver, RAL 9006, textured finish
- other parts  
Steel  
zinc plated, blue passivated
- RoHS



**Information**

Latches with cabinet U-handle GN 115.7 are used when the application requires both a locking mechanism and a handle.

A rotary movement limited to 90°, e.g. of the triangular spindle of type DK, shifts the key-bolt behind the door frame, with the bevelled key-bolt making the door closing action easier.

Latches with different cranks cover a latch distance A from 4 to 50 mm.

Latches with cabinet U-handle GN 115.7 are supplied with loosely enclosed latch.

see also...

- List of latch types → Page 892 ff.
- Latches with gripping tray GN 115.10 → Page 912

**Accessory**

- Socket keys 119.2 → Page 940

How to order

**GN 115.7-SCH-20-SR**

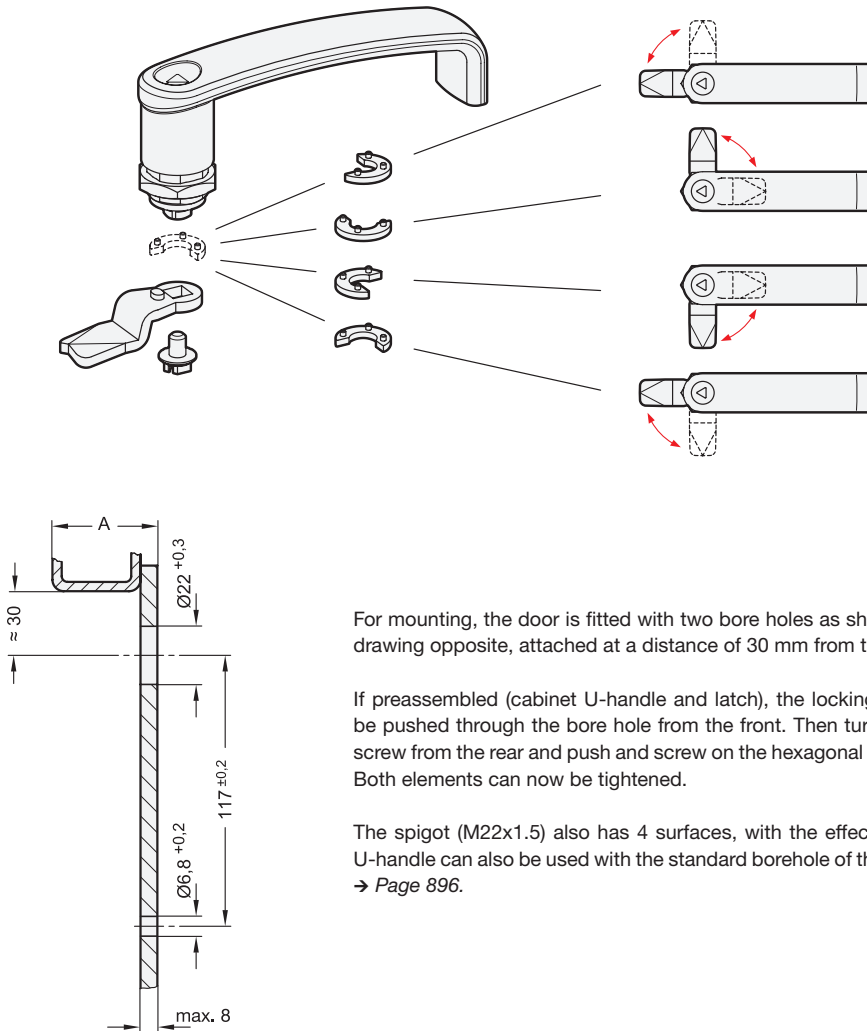
<b>1</b>	Type
<b>2</b>	Latch distance A
<b>3</b>	Finish

### Technical and assembly instructions

Depending on the installation situation, the 90° rotary movement range of the latch can be defined by means of a plug-type element which can be mounted in 4 different positions.

This allows the latch with U-handle to be used in any attachment position and regardless of the turning and locking direction of or the narrow side of the door. Subsequent repositioning of the 90° rotary range is possible.

The drawing below shows the plugging options and the resulting 90° rotary ranges.



For mounting, the door is fitted with two bore holes as shown in the outline drawing opposite, attached at a distance of 30 mm from the door frame.

If preassembled (cabinet U-handle and latch), the locking mechanism can be pushed through the bore hole from the front. Then turn in the M6 fixing screw from the rear and push and screw on the hexagonal nut over the latch. Both elements can now be tightened.

The spigot (M22x1.5) also has 4 surfaces, with the effect that the cabinet U-handle can also be used with the standard borehole of the latches GN 115 → Page 896.

3.1  
3.2  
3.3  
3.4  
3.5  
3.6  
3.7  
3.8  
3.9

