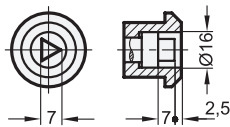
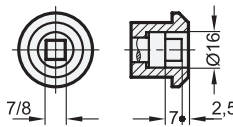


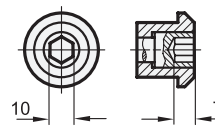
- Type**
- Operation with
  - DK** triangular spindle (DK7)
  - VK7** square spindle A/F7
  - VK8** square spindle A/F8
  - SCH** slot
  - VDE** double bit
  - SK10** hexagon A/F10



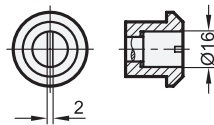
Type DK



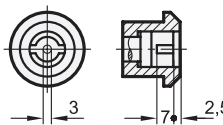
Type VK7 / VK8



Type SK10



Type SCH



Type VDE



Latch distance A											d	h
4	8	13	16	20	24	28	32	36	40	45	28	4
6	10	14	18	22	26	30	34	38	42	50	28	4

**Specification**

- Lock housing  
Zinc die casting
- Locating ring
  - chrome plated (Standard) —
  - plastic coated  
black, RAL 9005, textured finish ● SW
- All other parts  
Steel zinc plated, blue passivated
- RoHS

**Accessories**

- Socket keys GN 119.2 → Page 940
- Protective caps GN 120 → Page 942
- Opening handles GN 120.1 → Page 943



**Information**

Latches GN 115 lock by a turning operation limited to 90° which moves the locking behind the door frame. The bevels of the latch ease the closing of the door.

Latches with different cranks cover a latch distance A from 4 to 50 mm.

Latches GN 115 are supplied with loosely enclosed latch.

see also...

- Construction and assembly instructions → Page 897
- List of latch types → Page 892 ff.
- Latches GN 115 (operation with operating elements) → Page 899
- Stainless Steel-Latches GN 115 (operation with key) → Page 902

How to order (chrome plated locating ring)

1	Type
2	Latch distance A

GN 115-VK8-20

How to order (black locating ring)

1	Type
2	Latch distance A
3	Finish

GN 115-SCH-32-SW