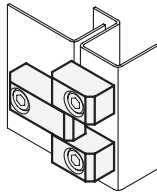
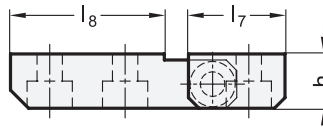
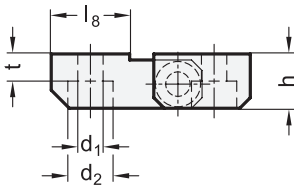


3 Type
A Mounting from the front side



1 **2**

l₁	l₂	b	d₁	d₂	d₃ Pin	h	l₃	l₄ max.	l₅	l₆ max.	l₇	l₈	m₁	m₂	m₃	t
66	55	18	8,4	15	8	18	24	42	12	29	32	26	41	37	-	9
91	55	18	8,4	15	8	18	24	67	12	29	32	51	41	37	25	9

Specification

- Steel
Zinc plated, blue passivated
- Pin
Brass, nickel plated
- Washer
Brass, nickel plated
- *Load Rating Information* → Page 2121
- RoHS

4

Information

ST

Hinges GN 129.3 are used for doors which are flush with the frame on the outside. Once assembled, they cannot be unhinged.

The hinges are fastened with socket cap screws DIN 912. This allows arbitrary wall thicknesses on the housing or door to be realized with the existing thread or using through-holes.

see also...

- *List of Hinge Types* → Page 1284 ff.
- *Hinges GN 129* → Page 1326

How to order

GN 129.3-66-55-A-ST

1	l₁
2	l₂
3	Type
4	Material

3.1
3.2
3.3
3.4
3.5
3.6
3.7
3.8
3.9

