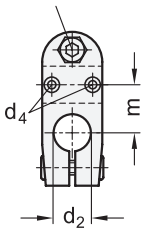
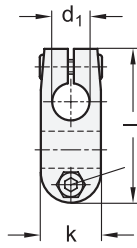


Clamping thread d_3

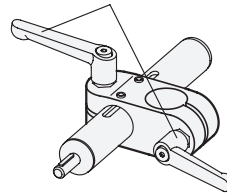


GN 131.1
for single axis system



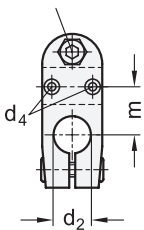
Clamping thread d_3

Clamping kit

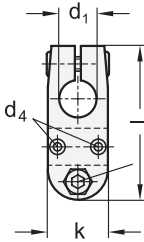


ROSTFREI
Inox
Stainless
Steel

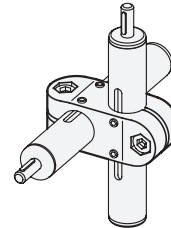
Clamping thread d_3



GN 131.2
for two-way axis system



Clamping thread d_3



3 Identification no.

2 with 2 Stainless Steel-Clamping screws DIN 912



1

2

d_1		d_2		d_3	d_4	k	Length l	m	Clamping kit for d_3	
Bore B without slide insert	Bore G with slide insert	GN 131.1 Single axis system	GN 131.2 Two way axis system	Clamping thread	Mounting screw on the follower	Clamping length			Lever zinc die casting	Lever Stainless Steel
B 18*	-	B 18	B 18	M 6	M 3	25	64	20	GN 911-M6-22	GN 911.3-M6-22
-	G 18	B 18	G 18	M 6	M 3	25	64	20	GN 911-M6-22	GN 911.3-M6-22

* only available in version SW

Specification

- Aluminum plastic coated black, RAL 9005, textured finish **● SW**
- Stainless Steel **● NI**
 - AISI CF-8
 - matte shot-blasted
 - only with slide insert
- Clamping bores mechanically machined
- Slide insert Plastic (PA / PTFE)
- Socket cap screws DIN 912 Stainless Steel AISI 304
- Hexagon nuts DIN 985 Stainless Steel AISI 304
- Stainless Steel characteristics → Page 1489
- Plastic characteristics → Page 1483
- RoHS

Accessory

- Clamping kits GN 911 / GN 911.3 → Page 1242

4

Information

GN 131.1 / GN 131.2 linear actuator connectors are normally supplied **mounted** only in connection with a linear actuator and for function control.

By means of the clamping screws on the guide bores d_1 / d_2 the movement can either be set or the linear actuator connector can be clamped (after setting of final adjustment).

The standard version of the clamping screws are socket cap screws with hexagonal socket DIN 912. They can be replaced by clamping kits GN 911 / GN 911.3 (article code see table of dimensions).

see also...

- Construction tubes GN 990 → Page 1277
- Linear actuators GN 291 → Page 1326
- Linear actuators GN 292 → Page 1328

How to order (Single axis system, Aluminum)

GN 131.1-G18-B18-2-SW

1	d_1
2	d_2
3	Identification no.
4	Finish

How to order (Two-way axis system, St. Steel)

GN 131.2-G18-G18-2-NI

1	d_1
2	d_2
3	Identification no.
4	Material