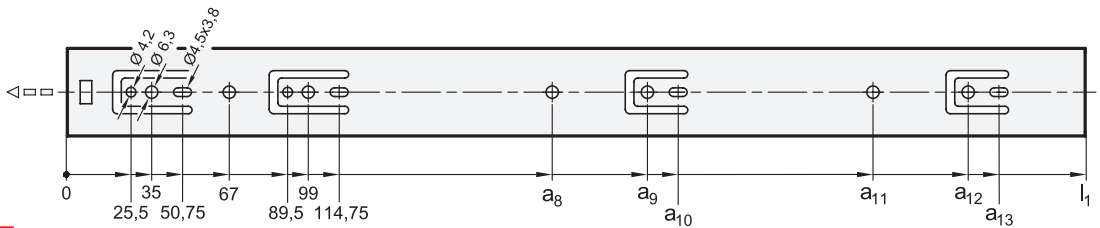
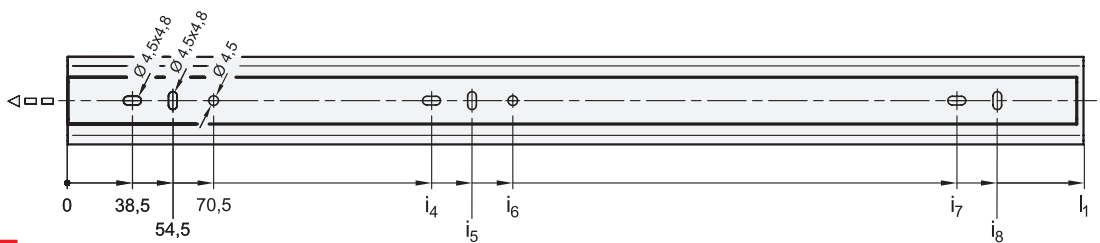


Mounting holes - outer slide



l_1	a_8	a_9	a_{10}	a_{11}	a_{12}	a_{13}
300	-	195	207,75	227	-	-
350	-	227	239,75	259	-	-
400	259	291	303,75	323	-	-
450	259	323	335,75	-	-	-
500	259	323	335,75	-	387	399,75
550	259	323	335,75	387	451	463,75
600	259	355	367,75	387	483	495,75
650	259	355	367,75	451	515	527,75
700	259	355	367,75	515	579	591,75

Mounting holes - inner slide



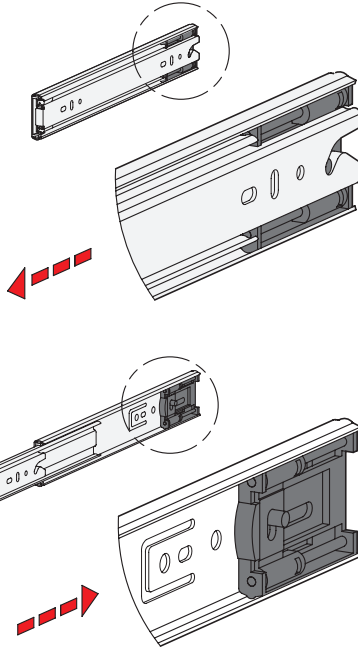
l_1	i_4	i_5	i_6	i_7	i_8
300	230,5	246,5	262,5	-	-
350	150,5	166,5	182,5	292,5	308,5
400	170,5	186,5	202,5	341,5	357,5
450	195,5	211,5	227,5	391,5	407,5
500	220,5	236,5	252,5	441,5	457,5
550	250,5	266,5	282,5	492,5	508,5
600	260,5	276,5	292,5	541,5	557,5
650	260,5	276,5	292,5	602,5	618,5
700	260,5	276,5	292,5	652,5	668,5

Fastening screws

For the said loading forces F_S to be absorbed reliably in the surrounding structure, all available through-holes of the outer slide having a diameter (\varnothing) of 4.2 and of the inner slide having a diameter (\varnothing) of 4.5 must be used. Alternatively, the outer slide has holes with a diameter (\varnothing) of 6.3 for Euro screws. The elongated holes, $\varnothing 4.5 \times 3.8$ of the outer slide and $\varnothing 4.5 \times 4.8$ of the inner slide, are used likewise for fastening and facilitate adjustment during mounting when needed. Failure to use fastening screws reduces the specified load capacity accordingly. The following screws can be used for mounting:

Designation - standard		Outer slide	Inner slide
Hexagon socket button head screw	ISO 7380	M 4	M 4
Pan head screw, Phillips	ISO 7045	M 4	M 4
Pan head tapping screw, Phillips	ISO 7049	ST 3,9 / 4,2	ST 3,9 / 4,2

Self-retracting mechanism

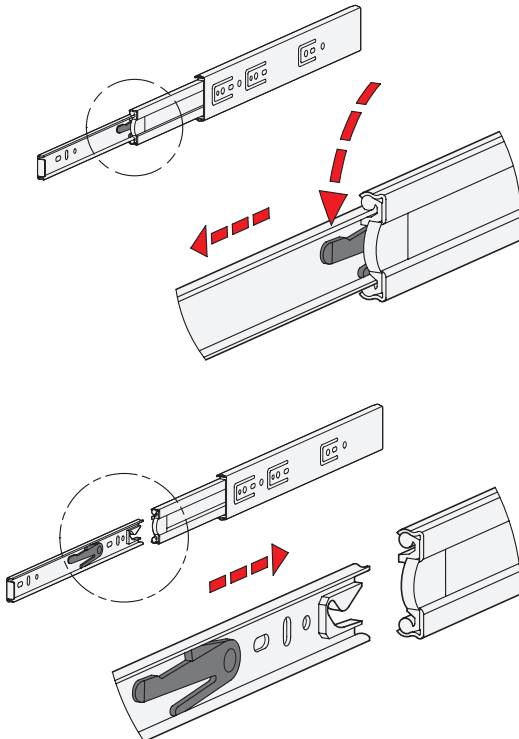


Telescopic slides GN 1412 have an integrated self-retracting mechanism, which improves considerably the ease of use when closing the extensions.

The slides are retracted and held in the back end position automatically by means of a retraction mechanism on the last 30 mm of stroke with a force of approximately 25 newtons for each slide pair.

In this slide variant the available retraction force can be regarded as a locking device, which is noticeable through a slight restriction on opening the extension.

Detach function



Type F has additionally a detach function through which the extension slides can be completely separated from one another in the area of the middle and inner slide. This feature not only facilitates mounting. It also allows the extension to be quickly removed, for example, when frequent maintenance work is performed on the components located behind.

The telescopic slide can be quickly and easily detached in the extracted position through activation of the release lever, allowing the inner slide to be removed from the front.

For reattaching the slides, the ball cages need to be moved to the front end position. Then the inner slide is inserted to the back end stop where it locks into place automatically.

The protected arrangement of the release mechanism prevents accidental detachment of the slide.

3.1
3.2
3.3
3.4
3.5
3.6
3.7
3.8
3.9

