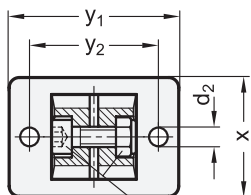
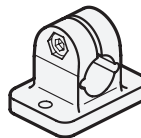
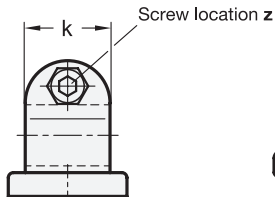
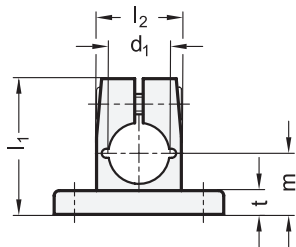


GN 145

Aluminum / Stainless Steel

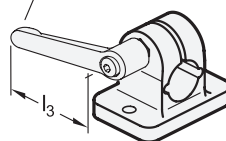
Flanged Connector Clamps

with 2 Mounting Holes



Socket cap screw / Hexagon nut

Adjustable hand lever GN 911 / GN 911.3



- 2 Identification no.
- 2 With stainless steel socket cap screw DIN 912



d ₁ Bore	Aluminum	Stainless steel	d ₂	k Clamping length	l ₁	l ₂	m	t	x	y ₁	y ₂	z Screw location	Accessory				
													Recommended hand lever for z				
													GN 911 for aluminum l ₃	GN 911.3 for SST l ₃			
B 10	-		5,5	25	40	25	18	7	35	50	38	M6-20	63	-	-	-	-
B 12	B 12		5,5	25	40	25	18	7	35	50	38	M6-20	45	63	-	-	-
B 14	B 14		5,5	25	40	25	18	7	35	50	38	M6-20	45	63	-	-	-
B 15	B 15		5,5	25	40	25	18	7	35	50	38	M6-20	45	63	-	-	-
B 16	B 16		5,5	25	40	25	18	7	35	50	38	M6-20	45	63	-	-	-
B 18	B 18		5,5	25	40	25	18	7	35	50	38	M6-20	45	63	63	-	-
-	B 20		5,5	25	40	25	18	7	35	50	38	M6-20	-	-	45	63	-

Specification

- Aluminum
 - Powder coated
 - Black, RAL 9005, textured finish ● **SW**
 - Plain, matte shot-blasted ○ **BL**
- Stainless steel AISI CF-8 **NI**
- Matte shot-blasted
- Socket cap screws DIN 912
- Stainless steel AISI 304
- Hex nuts DIN 985
- Stainless steel AISI 304
- Self-locking via polyamide ring
- *Stainless Steel Characteristics* → Page 2166
- **RoHS**

Accessory

- Adjustable Hand Levers GN 911 / GN 911.3 → Page 1784 / 1785

On request

- With inch bores



Information

The clamping bore of flanged connector clamps GN 145 is mechanically machined and designed for construction tubes GN 990 or DIN 2391, DIN 2395 and DIN 2462.

Flanged connector clamps GN 145 can also be mounted to **profile systems**.

At the screw location **z**, the socket cap screw reduces the bore cross-section for clamping.

For clamping without tools, the socket cap screw can be replaced by an adjustable hand lever GN 911 / GN 911.3 listed in the table as accessory. **see also...**

- *Base Plate Mountings Clamps GN 473* → Page 1789
- *Construction Tubes GN 990* → Page 1835
- *Retaining Tubes / Retaining Rods GN 480.1* → Page 1833

How to order (Aluminum)

1	d ₁
2	Identification no.
3	Finish

GN 145-B14-2-SW

How to order (Stainless steel)

1	d ₁
2	Identification no.
3	Material

GN 145-B12-2-NI

3.1

3.2

3.3

3.4

3.5

3.6

3.7

3.8

3.9

