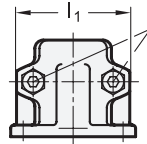
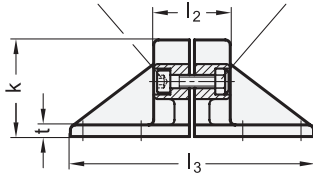


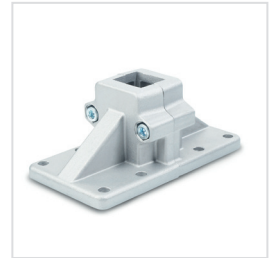
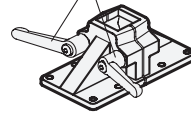
Clamping screw
Socket cap screw DIN 912

Hexagon nut DIN 985
self-locking (Polyamide ring)



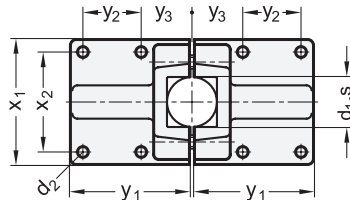
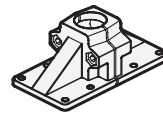
Clamping thread d_3

Clamping kit



2 Identification no.

2 with 2 Stainless Steel-Clamping screws DIN 912



1 **1**

d_1 Bore B	s Square V	d_2	d_3 Clamping thread	k Clamping length	l_1	l_2	l_3	t	x_1	x_2	y_1	y_2	y_3	Clamping kit for d_3
B 20	V 20	7	M 8	58	69	46	146	7	75	60	72	35	30	GN 911-M 8-40
B 25	V 25	7	M 8	58	69	46	146	7	75	60	72	35	30	GN 911-M 8-40
B 30	V 30	7	M 8	58	69	46	146	7	75	60	72	35	30	GN 911-M 8-40
B 40	V 40	11	M 10	91	98	70	218	14	115	90	108	50	45	GN 911-M10-63
B 42	-	11	M 10	91	98	70	218	14	115	90	108	50	45	GN 911-M10-63
B 45	V 45	11	M 10	91	98	70	218	14	115	90	108	50	45	GN 911-M10-63
B 48	-	11	M 10	91	98	70	218	14	115	90	108	50	45	GN 911-M10-63
B 50	V 50	11	M 10	91	98	70	218	14	115	90	108	50	45	GN 911-M10-63

Specification

- Aluminum
 - plastic coated black, RAL 9005, textured finish **● SW**
 - blank **○ BL**
 - matte shot-blasted
- Clamping bores not machined
- Socket cap screws DIN 912
Stainless Steel AISI 304
- Hexagon nuts DIN 985
Stainless Steel AISI 304
- Stainless Steel characteristics → Page 1489
- RoHS

Accessory

- Clamping kits GN 911 → Page 1242

3

Information

The clamping bores of GN 167 wide base plate connector clamps are not machined and specially designed for construction tubes GN 990 or DIN 2391, DIN 2395 and DIN 2462 respectively.

The square designs are also suitable for use in **profile systems**.

The standard version of the clamping screws are socket cap kits with hexagonal socket DIN 912. They can be replaced by clamping kits GN 911 (article code see table of dimensions).

see also...

- Construction tubes GN 990 → Page 1277

How to order

GN 167-V30-2-SW

- 1** s (d₁)
- 2** Identification no.
- 3** Finish