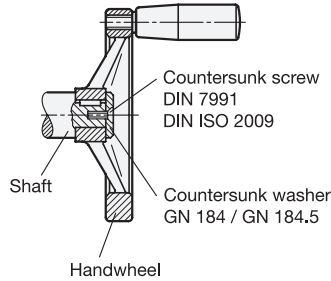
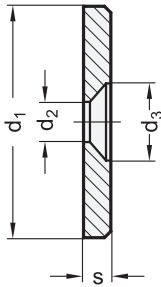


Example of application:  
Fixing  
of a handwheel  
with keyway  
on the shaft



ROSTFREI  
Inox  
Stainless  
Steel

1

d <sub>1</sub>	d <sub>2</sub>	d <sub>3</sub>	s	for countersunk screws DIN 7991 / DIN ISO 2009
16	4,3	8	3	M 4
20	4,3	8	3	M 4
22	5,3	10	3,5	M 5
25	5,3	10	3,5	M 5
28	5,3	10	3,5	M 5
32	6,4	12	4	M 6
36	6,4	12	4	M 6
40	6,4	12	5	M 6
45	6,4	12	6	M 6
52	6,4	12	6	M 6

## Specification

- **GN 184**  
Steel  
- turned  
- blackened
- **GN 184.5**  
Stainless Steel AISI 303  
- turned  
- matt shot-blasted
- *Stainless Steel characteristics* → Page 1489
- **RoHS**

## Information

Countersunk washers GN 184 / GN 184.5 are retained to the face of the shaft end with a countersunk head screw DIN ISO 2009 or DIN 7991 forming a clean-look end cap.

A typical application is the retention of handwheels with hub keyed to the shaft.

How to order (Steel)

1  
**GN 184-28**

1 d<sub>1</sub>

How to order (Stainless Steel)

1  
**GN 184.5-36**

1 d<sub>1</sub>