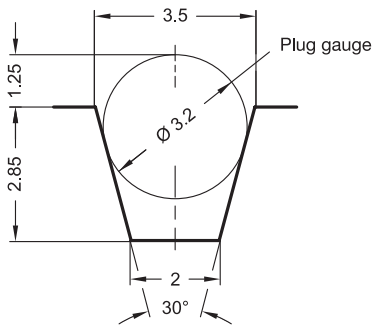
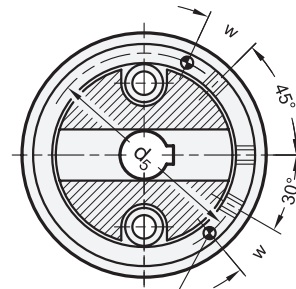


Enlargement of serrations with plug gauge to aid checking



Example with three serrations and restricted indexing angle



Dowel pin ISO 8750  $\varnothing 3,5 \times 7$  mm protruding  
(only applicable when restricted indexing angle is required)  
 $w$  = angle from serration (lever position)

### Technical and assembly instructions

The location pin is a wedge-type as standard, which guarantees backlash-free positioning and also achieving easy engagement and disengagement.

If backlash-free positioning is not required, a dowel pin (made from a grub screw DIN 915-M6x14) can be used. The serrations can be made square or with dowels and suitable holes. Such holes have to be made large enough to ensure that the dowel is not restricted on engagement (lever swivel radius).

Smallest available angle for special serrations:

11° for size 54

9° for size 60

Smaller angles can be achieved with suitable serrations and dowels.

1.1

1.2

1.3

1.4

2.1

2.2

2.3

2.4

