

**2 Type**

- A** With straight latch arm
- B** With offset latch arm

**3 Version**

- SL** Lockable by anti-clockwise turn
- SR** Lockable by clockwise turn
- OS** Without lock, moveable by 90 degrees

**1**

d <sub>1</sub>	a <sub>1</sub> Type A	a <sub>2</sub> Type B	b	d <sub>2</sub>	h <sub>1</sub>	h <sub>2</sub>	l <sub>1</sub> ±0,5 Type A	l <sub>2</sub> ±0,5 Type B
40	50	48	20	29	25	11	10	18

**Specification**

- Star knob  
Plastic (Polypropylene PP)  
- Black, matte finish  
- Temperature resistant up to 90 °C
- Latch arm  
Sheet steel, zinc plated
- Key  
Brass, nickel plated
- Other parts  
Steel zinc plated  
resp. brass or stainless steel
- *Plastic Characteristics* → Page 2158
- **RoHS**

**On request**

- Latches with identical lock
- Latches with central key

**Information**

Latches GN 217 with lock are supplied with two keys. The keys are numbered, there are 480 different combinations.

The key can be withdrawn from the lock in both end positions.

see also...

- *List of Latch Types* → Page 1196 ff.
- *Latches GN 115 (Operation with Operating Elements)* → Page 1200
- *Latches GN 115 (Lockable)* → Page 1203

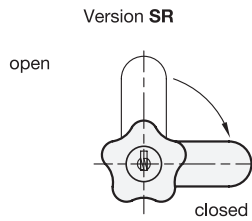
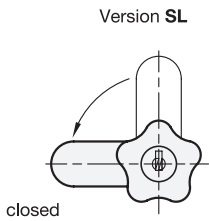
How to order

**GN 217-40-A-SR**

<b>1</b>	d <sub>1</sub>
<b>2</b>	Type
<b>3</b>	Version

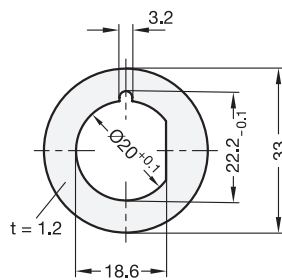
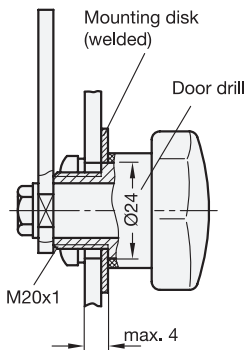
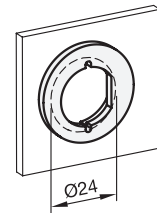


**Construction and assembly instructions**



**Construction examples**

with mounting disk



Location hole directly incorporated

