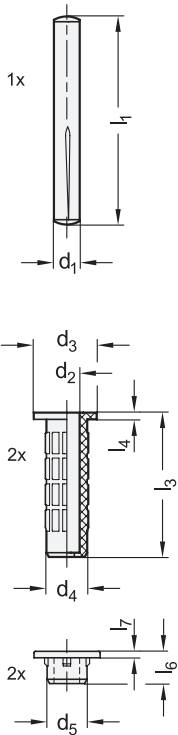
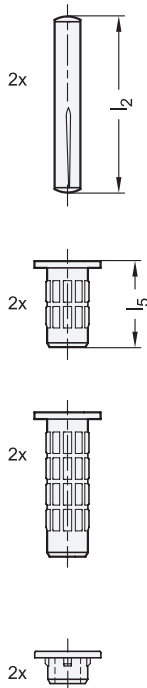


Identification no. 1



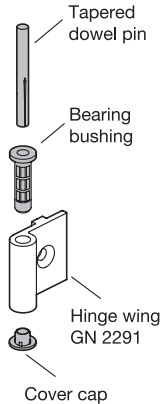
Identification no. 2



Identification no. 3



Assembly instruction



Identification no.

- 1 For two-part hinges
- 2 For three-part hinges, with short middle leaf
- 3 For three-part hinges, with elongated middle leaf

d ₁	d ₂	d ₃ ± 0,2	d ₄	d ₅	l ₁	l ₂	l ₃	l ₄	l ₅	l ₆	l ₇
6	6,15	13,9	8	7,8	60	50	33	1	20	7,5	1,5

Specification

- Bearing bushing / Cover cap
Plastic
Technopolymer (Polyamide PA)
Graphite gray, RAL 7024
- Tapered dowel pin ISO 8741
Steel
Zinc plated, blue passivated
- *Plastic Characteristics* → Page 2158
- RoHS



Information

Bolt sets GN 2290 are designed as accessories for GN 2291 hinge leafs for mounting individual hinge versions.

Bolt sets with identification no. 1 are designed for hinges with two hinge leafs, bolt sets with identification no. 2 and 3 are designed for hinges with three hinge leafs. Bolt sets with identification no. 2 are used exclusively for short middle leafs with a length of 40 mm. Bolt sets with identification no. 3 must be used for longer middle leafs.

see also...

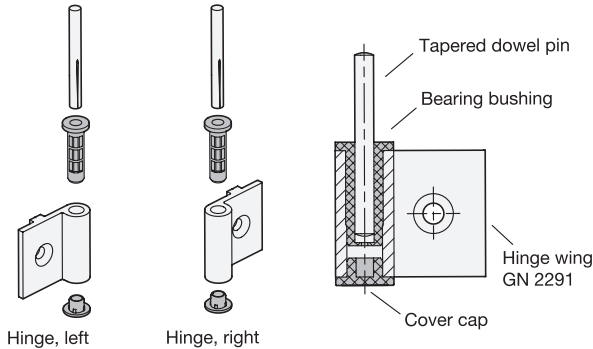
- *Hinge Leafs GN 2291* → Page 1318
- *Hinges GN 2292 (with Guide Step)* → Page 1380
- *Hinges GN 2294* → Page 1381
- *Hinges GN 2295 (Three-Part)* → Page 1314 / 1315

How to order

GN 2290-1-GR

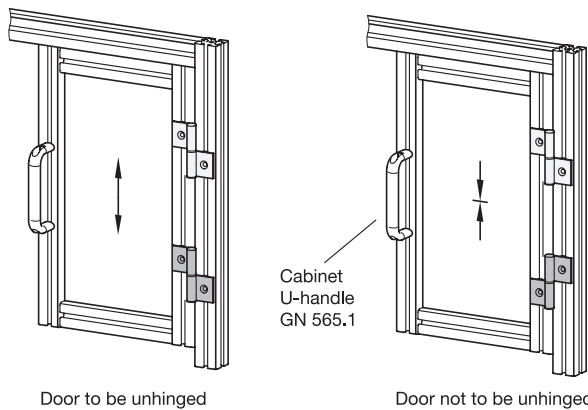
- | | |
|---|--------------------|
| 1 | Identification no. |
| 2 | Color |

Mounting information



Left / right hinges

Right or left hinges can be created by the direction in which the bearing bushings are inserted into the hinge leaf.

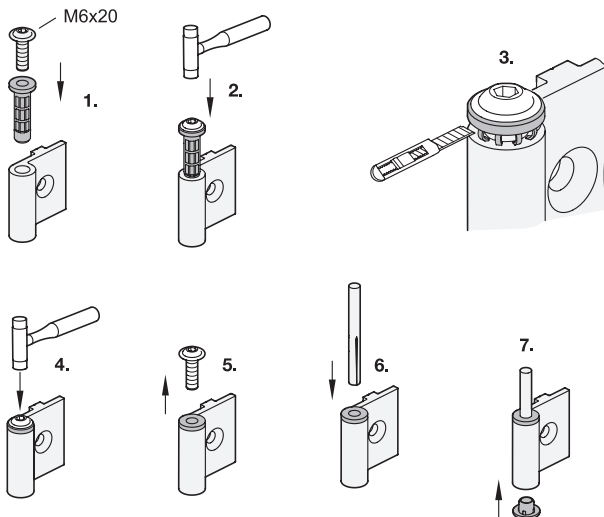


Mounting on door frames

For mounting a door that should be removable, two hinges of the same type must be attached to the door frame.

If the door is not supposed to be removable, the door must be mounted with at least one right hinge and at least one left hinge.

Mounting



1. Position the bearing bushing with the desired installation direction on the hinge leaf. Then insert a screw with a collar such as socket button head screws ISO 7380 into the bearing bushing to protect the bearing bushing collar from damage while pounding in.
2. Pound in the bearing bushing until about 1 mm remains between the bearing bushing collar and the hinge leaf.
3. Remove the burr on the bearing bushing using a knife.
4. Pound in the bearing bushing all the way.
5. Remove the screw.
6. Pound a tapered dowel pin into the bearing bushing.
7. Place the cover cap on the opposite side of the hinge leaf.

Insert the other bearing bushings according to points 1 to 5.