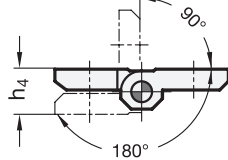
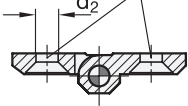


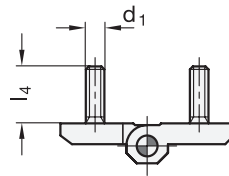
Swivelling range



Type A  
Bore for countersunk head screw  
DIN 7991



Type C



4 Type

- A 2x2 bores for countersunk screws
- C 2x2 threaded studs

2 3

l <sub>1</sub>	l <sub>2</sub>	Material						d <sub>1</sub>	d <sub>2</sub>	d <sub>3</sub>	h <sub>1</sub>	h <sub>2</sub>	h <sub>3</sub>	h <sub>4</sub> +0,5	l <sub>3</sub>	l <sub>4</sub>	m <sub>1</sub>	m <sub>2</sub>		
		Type A			Type C														ZD	NI, A4, AL
30	30	ZD	NI	A4	AL	-	-	-	4,3	3	7,5	4	4,3	8,6	10,7	10,7	-	-	18	18
40	40	ZD	NI	A4	AL	ZD	NI	M 5	5,3	4	9	5	5,5	11	14	16	12	11	25	25
50	50	ZD	NI	A4	AL	ZD	NI	M 6	6,4	6	11,5	6	6,5	13	18,5	21	12	13	30	30
60	60	ZD	NI	A4	AL	ZD	NI	M 8	8,3	8	15	8	8,5	17	21,5	26	14	17	36	36

Specification

1 5

- Zinc die casting **ZD**
  - plastic coated
  - black, RAL 9005, textured finish ● **SW**
  - silver, RAL 9006, textured finish ● **SR**
  - chrome-plated ● **CR**
- Stainless Steel
  - AISI CF-8 **NI**
  - German Material No. 1.4408 **A4**
  - matte blasted **GS**
- Aluminum **AL**
  - anodized, natural color ● **EL**
- Pin
  - Stainless Steel AISI 303 for ZD
  - Stainless Steel AISI 316Ti (A4) for AL, NI and A4
- Threaded stud (Type C)
  - Stainless Steel AISI 316 for ZD and AL
  - Stainless Steel AISI CF-8 for NI, casted „in one piece“
- *Stainless Steel characteristics* → Page 1489
- *Load rating information* → Page 1459 ff.
- **RoHS**

Information

GN 237 hinges are characterized by their compact and stable design. The various material and surface choices in combination with two mounting types enable very specific applications.

see also...

- *List of hinge types* → Page 956 ff.
- *Hinges GN 337 (detachable)* → Page 986
- *Hinges GN 238 (adjustable)* → Page 978
- *Hinges GN 237.1 (Plastic)* → Page 964
- *Sheet metal hinges GN 136* → Page 965
- *Hinges GN 138* → Page 966
- *Stainless Steel-Spacer plates GN 2370* → Page 961
- *Stainless Steel-Plates with tapped holes GN 2372* → Page 960
- *Rubber bumper stops GN 2374* → Page 962

How to order

1	Material
2	l <sub>1</sub>
3	l <sub>2</sub>
4	Type
5	Finish

GN 237-ZD-60-60-A-SR

3.1  
3.2  
3.3  
3.4  
3.5  
3.6  
3.7  
3.8  
3.9

