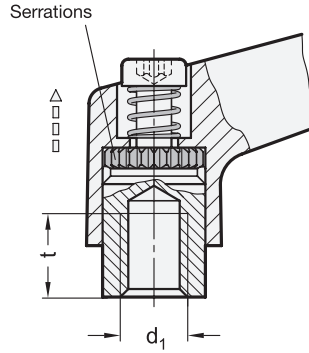
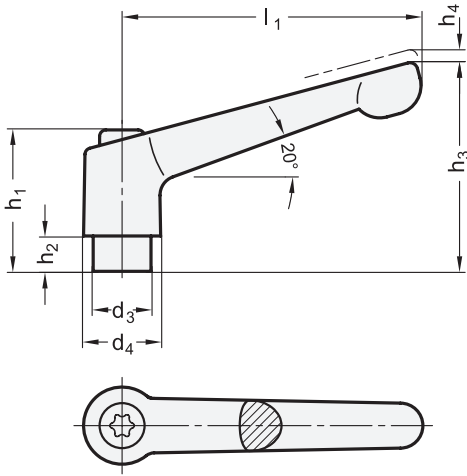


1.1
1.2
1.3
1.4
2.1
2.2
2.3
2.4



1 l_1	2 d_1			d_3	d_4	h_1	h_2	h_3	h_4 Stroke	t min.
22	M 3	M 4	M 5	8	10,5	18,5	2	23	3	5
30	M 4	M 5	M 6	10	13	24,5	4	31	3,5	8
45	M 4	M 5	M 6	10	13	24,5	4	34	3,5	8
63	M 6	M 8	-	13,5	17,5	31	6,5	45	4	11
78	M 8	M 10	-	16	21	36	8	54	4	14
92	M 10	M 12	-	19	24	43	11	64	4	17
108	M 12	M 16	-	23	30	50,5	12	75	5	22

Specification

Handle

Zinc die casting

• Powder coated

- Black, RAL 9005, textured finish
- Orange, RAL 2004, textured finish
- Red, RAL 3000, textured finish
- Silver, RAL 9006, textured finish

• Chrome plated

• Uncoated

Tumbled

- **SW**
- **OS**
- **RS**
- **SR**
- **CR**
- **RH**

Bushing / Retaining screw

Steel

Zinc plated, blue passivated

RoHS

Adjustable hand levers GN 300.2 are ideal whenever parts have to be clamped in a confined space or in a particular lever position. The centre insert is connected to the lever via serrations which can easily be disengaged.

Pulling the lever, disengages the serrations and allowing it to be swivelled to the ideal clamping position. On releasing the lever the serrations automatically re-engage.

see also...

	Page
GN 300 Adjustable Hand Levers (Insert Steel, Blackened)	QVX
GN 300.1 Adjustable Hand Levers (Insert Stainless Steel)	QVX
GN 300.5 Adjustable Hand Levers (Stainless Steel)	QVX
GN 303.2 Adjustable Hand Levers (Insert Steel Zinc Plated, with Releasing Button) QVX	QVX

How to order

GN300.2-78-M10-OS

1	l_1
2	d_1
3	Color (Finish)

