



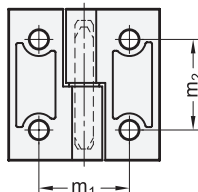
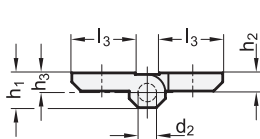
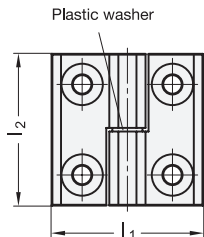
EDDELSTAHL®
Rostfrei
Inox
Stainless
Steel

4 Type

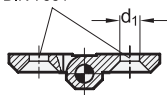
A 2x2 bores
for countersunk screws

5 Identification no.

- 1 fixed bearing (pin) right
- 2 fixed bearing (pin) left

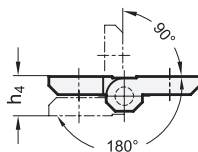


Bore for counter-sunk head screw
DIN 7991



Type A

Swivelling range



2

3

l_1	l_2	d_1	d_2	h_1	h_2	h_3	$h_4 + 0,5$	l_3	m_1	m_2
40	40	5,3	4	9	5	5,5	11	16	25	25
50	50	6,4	6	11,5	6	6,5	13	21	30	30
60	60	8,3	8	15	8	8,5	17	26	36	36

Specification

1 6

- Zinc die casting **ZD**
- plastic coated
- black RAL 9005, textured finish **● SW**
- silver RAL 9006, textured finish **● SR**
- Stainless Steel AISI CF-8 **NI**
- matte shot-blasted **GS**
- Pin
- Stainless Steel AISI 303
- *Stainless Steel characteristics* → Page 1489
- *Load rating information* → Page 1460
- **RoHS**

Information

see also...

- *List of hinge types* → Page 956 ff.
- *Hinges GN 237 (not detachable)* → Page 959
- *Stainless Steel-Plates with tapped holes GN 2372* → Page 960
- *Stainless Steel-Spacer plates GN 2370* → Page 961
- *Rubber bumper stops GN 2374* → Page 962

How to order

1	Material
2	l_1
3	l_2
4	Type
5	Identification no.
6	Finish

GN 337-ZD-40-40-A- 1 -SR