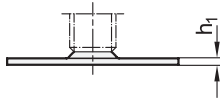
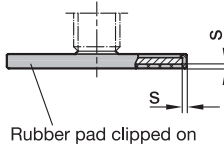


Type D0

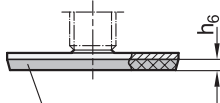


Type D1

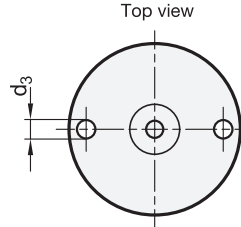


Rubber pad clipped on

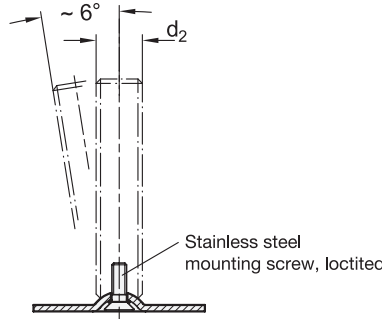
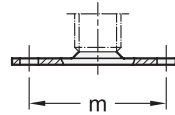
Type D3



Rubber pad vulcanized



Type B0



Stainless steel mounting screw, loctited



EDDELSTAHL®
Rostfrei
Inox
Stainless
Steel

4 Type (Base plate)

- D0** Without rubber pad
- B0** Without rubber pad, with 2 mounting holes
- D1** With rubber pad, clipped on, black
- D3** With rubber pad, vulcanized, black

| d ₁ | d ₂ | Version S / SK | | | | | | | Version T / TK und U / UK | | | | | | | Version V / VK | | | | Version W | | | | l ₇ Vers. X | A/F ₇ | t |
|----------------|----------------|----------------|----|-----|-----|-----|-----|-----|---------------------------|-----|-----|-----|-----|-----|-----|----------------|-----|-----|-----|-----------|-----|-----|-----|------------------------------|------------------|---|
| | | 40 | 50 | 60 | 80 | 100 | 125 | - | 75 | 100 | 125 | 150 | 200 | 250 | - | 75 | 100 | 125 | 150 | 110 | 135 | 160 | 185 | | | |
| 40 | M 8 | 40 | 50 | 60 | 80 | 100 | - | - | - | - | - | - | - | - | - | - | - | - | - | - | - | - | 25 | 14 | 8 | |
| 40 | M 10 | 50 | 60 | 80 | 100 | - | - | - | - | - | - | - | - | - | - | - | - | - | - | - | - | - | 28 | 14 | 10 | |
| 40 | M 12 | 60 | 80 | 100 | 125 | - | - | - | - | - | - | - | - | - | - | - | - | - | - | - | - | - | 31 | 17 | 12 | |
| 40* | M 16 | - | - | - | - | 75 | 100 | 125 | 150 | 200 | 250 | - | - | - | - | - | - | - | - | - | - | - | 37 | 22 | 16 | |
| 50 | M 8 | 40 | 50 | 60 | 80 | 100 | - | - | - | - | - | - | - | - | - | - | - | - | - | - | - | - | 25 | 14 | 8 | |
| 50 | M 10 | 50 | 60 | 80 | 100 | - | - | - | - | - | - | - | - | - | - | - | - | - | - | - | - | - | 28 | 14 | 10 | |
| 50 | M 12 | 60 | 80 | 100 | 125 | - | - | - | - | - | - | - | - | - | - | - | - | - | - | - | - | - | 32 | 17 | 12 | |
| 50 | M 16 | - | - | - | - | 75 | 100 | 125 | 150 | 200 | 250 | - | - | - | - | - | - | - | - | - | - | - | 37 | 22 | 16 | |
| 60 | M 8 | 40 | 50 | 60 | 80 | 100 | - | - | - | - | - | - | - | - | - | - | - | - | - | - | - | - | 25 | 14 | 8 | |
| 60 | M 10 | 50 | 60 | 80 | 100 | - | - | - | - | - | - | - | - | - | - | - | - | - | - | - | - | - | 28 | 14 | 10 | |
| 60 | M 12 | 60 | 80 | 100 | 125 | - | - | - | - | - | - | - | - | - | - | - | - | - | - | - | - | - | 32 | 17 | 12 | |
| 60 | M 16 | - | - | - | - | 75 | 100 | 125 | 150 | 200 | 250 | 75 | 100 | 125 | 150 | 110 | 135 | 160 | 185 | - | - | - | 37 | 22 | 16 | |
| 80 | M 8 | 40 | 50 | 60 | 80 | 100 | - | - | - | - | - | - | - | - | - | - | - | - | - | - | - | - | 26 | 14 | 8 | |
| 80 | M 10 | 50 | 60 | 80 | 100 | - | - | - | - | - | - | - | - | - | - | - | - | - | - | - | - | - | 29 | 14 | 10 | |
| 80 | M 12 | 60 | 80 | 100 | 125 | - | - | - | - | - | - | - | - | - | - | - | - | - | - | - | - | - | 32 | 17 | 12 | |
| 80 | M 16 | - | - | - | - | 75 | 100 | 125 | 150 | 200 | 250 | 75 | 100 | 125 | 150 | 110 | 135 | 160 | 185 | - | - | - | 38 | 22 | 16 | |
| 80 | M 20 | - | - | - | - | 75 | 100 | 125 | 150 | 200 | 250 | 100 | 125 | 150 | 200 | 134 | 159 | 184 | 234 | - | - | - | 45 | 27 | 20 | |
| 80 | M 24 | - | - | - | - | 100 | 125 | 150 | 200 | 300 | - | 100 | 150 | 200 | - | 159 | 209 | 259 | - | - | - | - | - | - | - | |

* not available in type B0

Specification

- Base plate, blank ground
Stainless steel AISI 304
- Threaded stem
Stainless steel AISI 303
- Hex nut ISO 4032
Stainless steel
- Rubber cap, clipped on
Black, TPE (Santoprene®)
≈ 80 Shore A
- Rubber pad, vulcanized
Black, NBR (Perbunan®)
70±5 Shore A
- Load Rating Information → Page 2145
- Plastic Characteristics → Page 2158
- Stainless Steel Characteristics
→ Page 2166
- RoHS

Versions of threaded stem

| | | |
|---|--|---|
| <p>S Without nut SK With nut</p> | <p>T Without nut TK With nut</p> | <p>U Without nut UK With nut</p> |
| <p>External hex at the bottom at d_2 M 8, M 10, M 12</p> | <p>Wrench flat at the bottom at d_2 M 16, M 20, M 24</p> | <p>Hex socket at the top and wrench flat at the bottom at d_2 M 16, M 20, M 24</p> |
| <p>V Without nut VK With nut</p> | <p>W With adjustable sleeve</p> | <p>X With internal thread</p> |
| <p>External hex at the top and wrench flat at the bottom at d_2 M 16, M 20, M 24</p> | <p>Covered thread and wrench flat at the bottom at d_2 M 16, M 20, M 24</p> | <p>External hex with internal thread at d_2 M 8, M 10, M 12, M 16, M 20</p> |

| d_1 | d_2 | | | d_3 | d_5 | h_1 | h_3 | h_4 | h_5 | h_6 | l_4 | l_5 | l_6 | m | s | A/F ₁ | A/F ₂ | A/F ₃ | A/F ₄ | A/F ₅ | A/F ₆ |
|-------|-------|------|------|-------|-------|-------|-------|-------|-------|-------|-------|-------|-------|-----|-----|------------------|------------------|------------------|------------------|------------------|------------------|
| 40 | M 8 | M 10 | M 12 | 5,4 | - | 2 | 11 | - | - | 3,5 | - | - | - | 30 | 1,5 | 17 | - | - | - | - | - |
| 40 | M 16 | - | - | 5,4 | - | 2 | - | 17 | 14 | 3,5 | - | - | - | 30 | 1,5 | - | 12 | 8 | - | - | - |
| 50 | M 8 | M 10 | M 12 | 6,6 | - | 2,5 | 11 | - | - | 4 | - | - | - | 38 | 2 | 17 | - | - | - | - | - |
| 50 | M 16 | - | - | 6,6 | - | 2,5 | - | 17 | 14 | 4 | - | - | - | 38 | 2 | - | 12 | 8 | - | - | - |
| 60 | M 8 | M 10 | M 12 | 6,6 | - | 2,5 | 11 | - | - | 4,5 | - | - | - | 48 | 2 | 17 | - | - | - | - | - |
| 60 | M 16 | - | - | 6,6 | 24 | 2,5 | - | 17 | 14 | 4,5 | 45 | 45 | 29 | 48 | 2 | - | 12 | 8 | 10 | 12 | 20 |
| 80 | M 8 | M 10 | M 12 | 8,5 | - | 3 | 12 | - | - | 5 | - | - | - | 64 | 2 | 17 | - | - | - | - | - |
| 80 | M 16 | - | - | 8,5 | 24 | 3 | - | 18 | 15 | 5 | 45 | 45 | 29 | 64 | 2 | - | 12 | 8 | 10 | 12 | 20 |
| 80 | M 20 | - | - | 8,5 | 30 | 3 | - | 19 | 15 | 5 | 56 | 56 | 37 | 64 | 2 | - | 15 | 10 | 13 | 16 | 24 |
| 80 | M 24 | - | - | 8,5 | 35 | 3 | - | 22 | 18 | 5 | 67 | 67 | 42 | 64 | 2 | - | 19 | 12 | 17 | 20 | 30 |

Information

Leveling feet GN 41 are for use in aggressive environments. The range of combinations of base plates and adjustable spindle versions allows these leveling feet to be used in every situation.

The base plate with the rubber pad protects sensitive surfaces and reduces lateral slippage. The type B0 can also be fastened to the mounting surface through two holes.

The leveling feet are supplied fully assembled and are not removable.

see also...

- *Leveling Feet GN 40 (Steel, without Fixing Lug)* → Page 1460
- *Leveling Feet GN 42 (Steel, with Fixing Lug)* → Page 1466 / 1468
- *Leveling Feet GN 43 (Stainless Steel, with Fixing Lug)* → Page 1472 / 1470
- *Leveling Feet GN 44 / GN 45 (Stainless Steel, without / with Fixing Lug)* → Page 1464 / 1474
- *Insert Bushings GN 448 (Plastic, for Tubes)* → Page 1498 / 1499
- *Insert Bushings GN 992 / GN 992.5 (Aluminum, St. Steel)* → Page 1501

How to order

| | |
|---|---------------------------|
| 1 | d_1 |
| 2 | d_2 |
| 3 | l_1 (l_2, l_3, l_7) |
| 4 | Type (Base plate) |
| 5 | Version (Stem) |

GN 41-80-M16-75-D0-TK