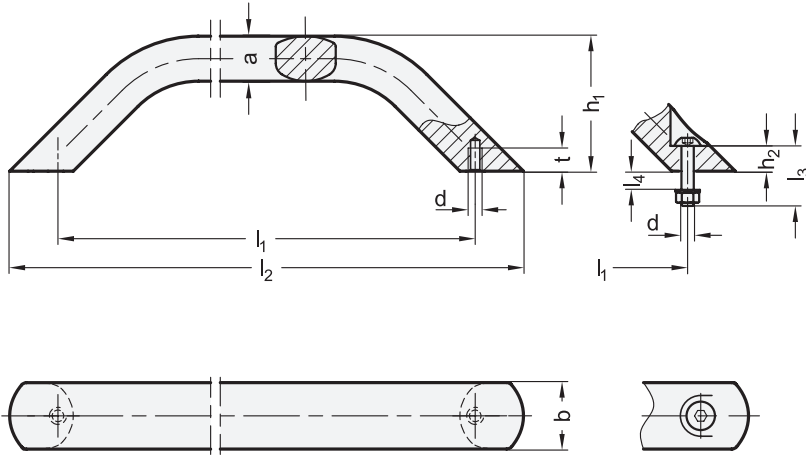


Type A

Type B



- 4 Type**
- A** Mounting from the back (threaded blind bore)
 - B** Mounting from the operators side

2 b	3 l₁	a	d	h₁	h₂	l₂	l₃	l₄	t
28	200	18	M 8	63	11,8	240	30	10	10
28	250	18	M 8	63	11,8	290	30	10	10
28	300	18	M 8	63	11,8	340	30	10	10
28	400	18	M 8	63	11,8	440	30	10	10
36	300	26	M 10	71	16,6	355	40	13	14
36	400	26	M 10	71	16,6	455	40	13	14
36	500	26	M 10	71	16,6	555	40	13	14
36	600	26	M 10	71	16,6	655	40	13	14
36	800	26	M 10	71	16,6	855	40	13	14

Specification

Handle

Aluminum

AL

- Powder coated
 - Black, RAL 9005, textured finish
 - Silver, RAL 9006, textured finish
- Anodized, natural color

- **SW**
- **SR**
- **EL**

Fastening set for type B

Stainless steel AISI 304

- Socket button head screws ISO 7380
- Hex nuts ISO 4032
- Washers DIN 125

RoHS

On request

- Other finishes

Cabinet U-handles GN 428 are manufactured from a bent aluminum profile and have excellent stability and ergonomic design.

For type B, socket button head screws, hex nuts and washers are included parts of the order.

Especially in combination with the smaller cabinet U-handles GN 328, they meet the requirements of modern industrial design.

see also...

	Page
GN 328 Cabinet U-Handles	QVX
GN 426 Cabinet U-Handles	QVX

Technical Information

Load Rating Information	QVX
Stainless Steel Characteristics	QVX

How to order

1 Material
2 b
3 l ₁
4 Type
5 Finish

GN 428-AL-28-300-A-SW