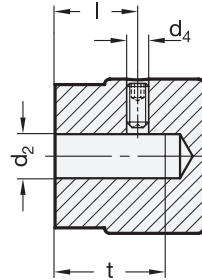


0 resp. arrow  
opposite grub screw



**3 Type**

- A** with arrow
- B** neutral, without arrow or scale
- S** with standard scale 0...9 20 graduations

<b>1</b> $d_1$	<b>2</b> $d_2$ H8 Bore		$d_3$	$d_4$	$h_1$	$h_2$	Length $l$	$t$ min.
24	B 5	B 6	22	M 4	24	8	12	18
28	B 6	B 8	26	M 4	27	9	13	20

**Specification**

- Stainless Steel AISI 304 - matte shot-blasted **MT**
- Scale (Type S) and arrow (Type A) engraved with laser precision
- Stainless Steel-Grub screw DIN 916 with internal hexagon and serrated point
- *ISO-Fundamental tolerances* → Page 1479
- *Stainless Steel characteristics* → Page 1489
- **RoHS**

**On request**

- special graduations see „How to order Graduations“ → Page 252

**Information**

Scale and arrow on the Stainless Steel-Control knobs GN 436.1 are indelibly marked and easily legible.

Besides the standard scale (Type S) the control knobs can be supplied with any type of graduation.

Regarding design, numbering run, numbering position and numbering sequence of the scale please see the layout for scale knobs on the order sheet „How to order Graduations“ → Page 252

How to order

**GN 436.1-28-B6-S-MT**

<b>1</b>	$d_1$
<b>2</b>	$d_2$
<b>3</b>	Type
<b>4</b>	Finish

1.1  
1.2  
1.3  
1.4  
2.1  
2.2  
2.3  
2.4

