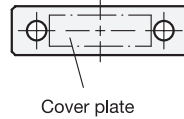
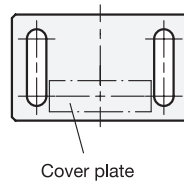


View from below



View from below



2 Type

- A1** Magnetic surface top, with bore
- A2** Magnetic surface top, with slotted hole
- C1** Magnetic surface laterally, with bore
- C2** Magnetic surface laterally, with slotted hole

3 Coding

- W** Without contact plate
- F** With contact plate, with countersunk hole
- L2** With contact plate, L-profile, with slotted hole
- L3** With contact plate, L-profile, with slotted hole, elongated
- Z2** With contact plate, Z-profile, with slotted hole
- Z3** With contact plate, Z-profile, with slotted hole, elongated

1

l_1	b	d_1	h_1	k	l_2 Type A1 / C1	l_2 Type A2 / C2	l_3	m_1	m_2	s_1	Nominal magnetic forces in N
50	7	5,5	10	4,6	12	30	24	38	18	0,5	30

Coding F

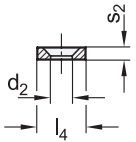
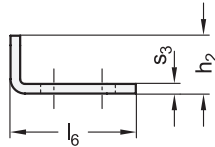
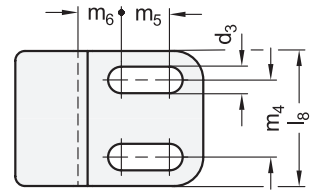
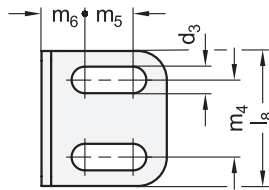
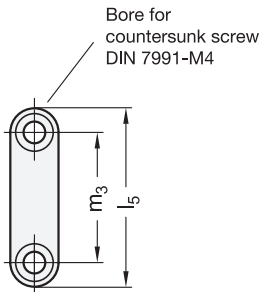
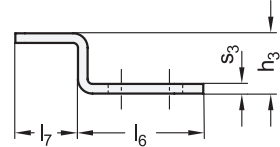
d_2	l_4	l_5	m_3	s_2
4,5	10	40	30	2,5

Coding L2 / Z2

d_3	h_2	h_3	l_6	l_7	l_8	m_4	m_5	m_6	s_3
5,5	12	12,5	26	13	28	16	10	9	2

Coding L3 / Z3 (elongated)

d_3	h_2	h_3	l_6	l_7	l_8	m_4	m_5	m_6	s_3
5,5	12	12,5	38	13	28	16	14	15	2

Coding **F**Coding **L2 / L3**Coding **Z2 / Z3**

Specification

- Zinc die casting
Powder coated
Black, RAL 9005, textured finish ● **SW**
Silver, RAL 9006, textured finish ● **SR**
- Material of the magnet
NdFeB
Neodymium, iron, boron
Temperature resistant up to 80 °C
- Rubber cap (magnetic surface)
Elastomer (TPE), black
Hardness ≈ 80 Shore A
- Contact plate
Steel
Zinc plated, blue passivated
- [Elastomer Characteristics](#) → Page 2158
- **RoHS**

On request

- Further finishes
- Other magnetic surfaces
- Contact plates with other dimensions
- Contact plates with other shapes
- Contact plates with other finishes

Information

Magnetic catches GN 4470 are compact parts that hold covers, doors and sliding doors closed. The rubberized magnetic surface reduces noise and prevents damage to the opposite part.

The contact plates for diverse installation situations expand the possible range of applications and are used, for example, when magnetic catches are desired but the opposite part is non-magnetic.

For magnetic catches of types A1 and A2, full-surface contact in the area of the locking plate must be ensured during installation.

see also...

- [Product Family Standard Parts for Profile Systems](#) → Page 18
- [More Information to Retaining Magnets](#) → Page 2028
- [Ball Catches GN 4490 \(Zinc die casting\)](#) → Page 1261
- [Ball-Shaped Door Locks GN 450 \(Plastic\)](#) → Page 1262
- [Spring-Bolt Latches GN 449 \(Plastic\)](#) → Page 1256
- [Assembly Sets for Profile Systems 30 / 40 GN 965](#) → Page 2086
- [Assembly Sets for Profile Systems 30 / 40 / 45 GN 968](#) → Page 2096

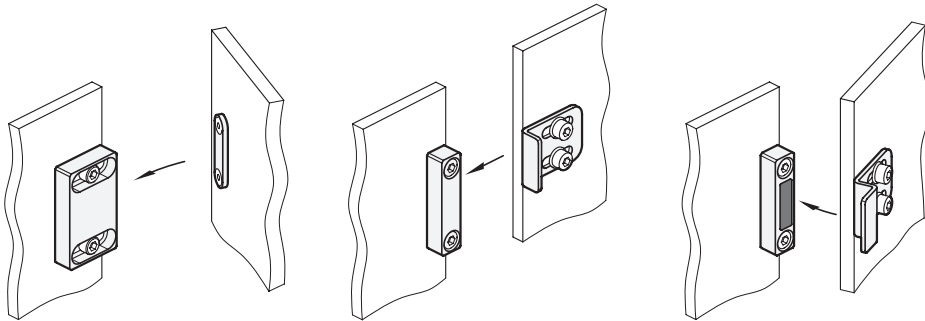
How to order

GN 4470-50-A1-L2-SR

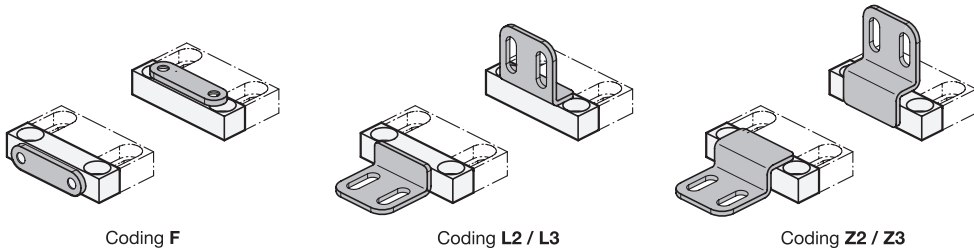
- 1 l₁
- 2 Type
- 3 Coding
- 4 Finish



Application examples



Possible combinations magnetic catch - contact plate



Use on profile systems

Grid dimension	Magnetic catch with contact plate				
Profile system	A1 - L ...		A2 - Z ...	C2 - F	C2 - L ...
	Surface-mounted door	Surface-mounted door - Countersunk magnet	Inset door	Surface-mounted door	Sliding door
20	-	L2	Z2 s = 0 ... 10 mm	F	L2 s = 0 ... 10 mm
30	-	L2	Z3 s = 0 ... 15 mm	F	L3 s = 0 ... 15 mm
40	L2	L3	Z3 s = 0 ... 10 mm	F	L3 s = 0 ... 10 mm
45	L2	L3	Z3 s = 0 ... 7 mm	F	L3 s = 0 ... 7 mm