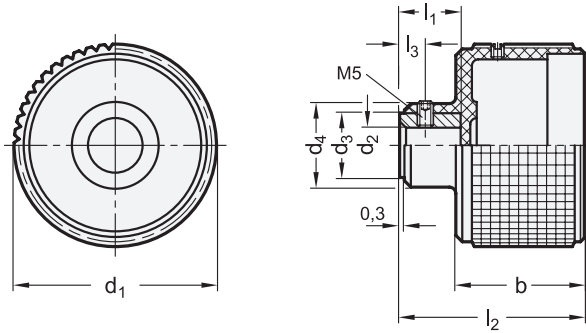




elesa
Original design MBT. GXX



1 d_1	2 d_2 H7 Bore	d_3	d_4	b	l_1	l_2	l_3	For position indicators	
								GN 000.8 Size	GN 000.3 Size
60	B 8	18	24	35,5	17,5	51	6	42	-
80	B 10	22	28	38	22	58	6	60	60

Specification

Knob

- Plastic, Polyamide (PA)
- Glass fiber reinforced
- Operating temperature 0 °C to +100 °C
- Black, matte finish

Bushing

Steel, blackened

Grub screw

Stainless Steel

RoHS

Hand knobs GN 534.8 have a recess in the hub to accept position indicators GN 000.8 and GN 000.3.

Moreover, the special profile of the knurl, namely small squares, is characteristic of the shape and function of these hand knobs.

For applications in which these hand knobs are used with or without a position indicator, cover caps are available to shroud the recess.

see also...

Page

GN 5348 Hand Knobs with Position Indicator (with integrated Position Indicators) QVX

Technical Information

Mounting sequence GN 534.8 QVX

ISO Fundamental Tolerances QVX

Plastic Characteristics QVX

Accessory

GN 000.8 Position Indicators (Pendulum System, Analog Indication) QVX

GN 000.3 Position Indicators (Pendulum System, Digital / Analog Indication) QVX

GN 576 Hub Caps (for Control Knobs / Handwheels without Position Indicators) QVX

GN 826 Clamping Elements (for Adjustable Spindles) QVX

How to order

GN 534.8-60-B8

1 d_1

2 d_2



Installation sequence

1. Install the position indicator to the spindle and fix it with the screw.
2. Turn the spindle to the starting point (0-position).
3. Move position indicator „by hand“ to the 0-position before mounting it.
4. Install the position indicator into the recess of the hub and fix it with a screw.
Do not apply unnecessarily excessive torque to avoid deformation of the housing!
5. Rotate the handwheel and ascertain that the starting point of the spindle is aligned with the 0-position of the two pointers (GN 000.8) respectively pointer and counter (GN 000.3).
Should that not be the case the screw has to be loosened and the position indicator adjusted. Tighten the screw again.