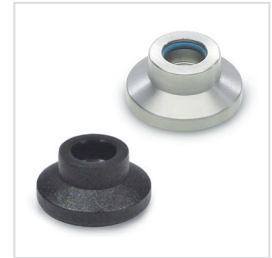
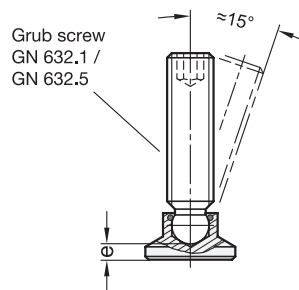
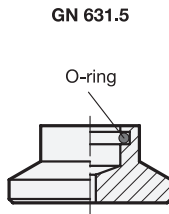
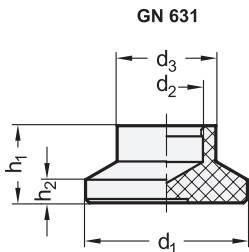


Mounting example



 Inox
Stainless
Steel

d ₁		d ₂	d ₃	e ≈	h ₁	h ₂	Grub screw GN 632.1 / GN 632.5
GN 631	GN 631.5						
15	-	4,5	8,6	3,6	7,6	2,5	M 6
15	-	6,1	8,6	2,5	7,6	2,5	M 8
18	-	4,5	10,8	5,2	9,2	2,5	M 6
18	-	6,1	10,8	4,2	9,2	2,5	M 8
18	-	7,8	10,8	3,8	9,2	2,5	M 10
21	21	4,5	12,8	6	10	3	M 6
21	21	6,1	12,8	5	10	3	M 8
21	21	7,8	12,8	4,3	10	3	M 10
21	21	9,4	12,8	3,4	10	3	M 12
25	25	4,5	13	6,5	10,5	3	M 6
25	25	6,1	13	5,5	10,5	3	M 8
25	25	7,8	13	4,6	10,5	3	M 10
25	25	9,4	13	3,6	10,5	3	M 12
32	32	4,5	14	7	11	3	M 6
32	32	6,1	14	6	11	3	M 8
32	32	7,8	14	5	11	3	M 10
32	32	9,4	14	4,2	11	3	M 12
40	40	6,1	16	8	13	4	M 8
40	40	7,8	16	7	13	4	M 10
40	40	9,4	16	6,2	13	4	M 12
50	50	6,1	16	10,4	15,5	4	M 8
50	50	7,8	16	9,3	15,5	4	M 10
50	50	9,4	16	8,7	15,5	4	M 12

Specification

- **GN 631**
Plastic Technopolymer (Polyacetal POM)
- temperature resistant up to 80 °C
- black, matte
- **GN 631.5**
- Stainless Steel AISI 303
- O-Ring rubber FPM (Viton®)
temperature resistant up to 200 °C
- *Plastic characteristics* → Page 1483
- *Stainless Steel characteristics* → Page 1489
- **RoHS**

Information

Thrust pads GN 631 / GN 631.5 are suitable for universal use and are combined with ball point grub screws GN 632.1 / GN 632.5. These can be easily pressed into the thrust pad and removed again, if necessary.

see also...

- *Information of static load* → Page 1030

How to order (Plastic)

GN 631-18-6,1

1 d₁

2 d₂

How to order (Stainless Steel)

GN 631.5-32-7,8

1 d₁

2 d₂