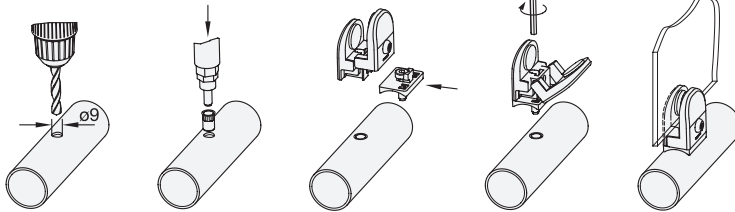


ELESA original design APC.

Installation instruction



- Drill hole
- Mount the blind rivet nut
- Push the adapter with the cylinder head screw underneath the clamp
- Tighten adapter and clamp
- Mount the panel element



d Tube Ø from - up to	Code no.
30 - 34	GN 649.1-30-34
40 - 43	GN 649.1-40-43
48 - 52	GN 649.1-48-52

Specification

- Plastic (Polyamide PA)
 - glass fiber reinforced
 - temperature resistant up to 80 °C
 - grey, matt, RAL 7042
- Flat cylinder head screw DIN 7984-M6
Steel
zinc plated, blue passivated
- Blind rivet nut M6
Steel
zinc plated, blue passivated
- *Plastic characteristics* → Page 1483
- RoHS

Information

Adapter 649.1 allow panel support clamps GN 649 to be mounted to round tubes.

Mounting the M6 blind rivet nut requires commercial blind rivet nut pliers or a setting tool.

The blind rivet nut and the flat cylinder head screw DIN 7984-M6 are included with the delivery.

How to order

GN 649.1-30-34

1 d

3.1
3.2
3.3
3.4
3.5
3.6
3.7
3.8
3.9

