

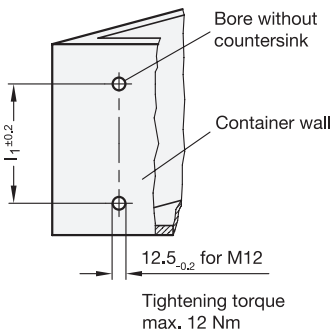
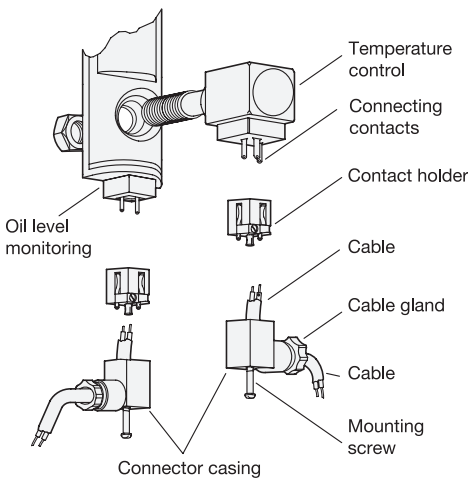
### Electrical specifications

<b>Oil level monitoring</b>	
Max. switching voltage /	150 V AC, 100 V DC / 1 A (NO)
Max. switched current:	150 V AC, 150 V DC / 2 A (NC)
Max. switching capacity:	10 W (NO) / 20 W (NC)
<b>Temperature monitoring</b>	
Max. switching voltage /	250 V AC / 10 A
Max. switching current:	48 V DC / 5 A
<b>Oil level and temperature monitoring</b>	
Connector plug:	DIN EN 175301-803 type C
Protection class:	IP 65
Cable gland:	PG 7, for cable Ø from 6 to 7 mm
Cable cross-section:	2 x 1,5 mm <sup>2</sup>

Caution: Magnet fields impair the proper function!

### Assembly sequence for cable connection

1. Loosen the mounting screw and pull off the connector plug.
2. Push the contact holder out off the connector casing.
3. Loosen the cable gland, feed the cable through the connector casing and connect to the contact holder.
4. Push the contact holder back into the connector casing and tighten the cable gland for strain relief grip / seal.
5. Push the connecting plug over the connecting contacts of the oil level indicator and secure with mounting screw.



### Assembly instructions

Two tapped holes M12 are required for mounting the oil level indicator GN 650.5. If nuts are used for mounting, two Ø 12.5 bore holes are required.

For the best possible sealing effect of the O-rings, do not over-tighten the screws (max. 12 Nm). Recommended roughness of the sealing flange surface Ra = 3 µm.

3.1  
3.2  
3.3  
3.4  
3.5  
3.6  
3.7  
3.8  
3.9

