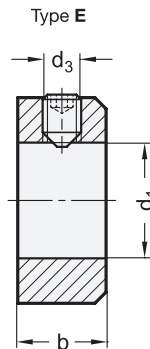
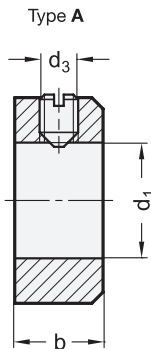


Second grub screw for size $d_1 = 80$

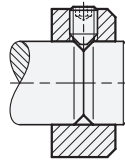
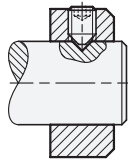


Assembly examples

Positioning through

Dimpled hole

Groove



2 Type

- A** Grub screw with slot ISO 7434 (DIN 553)
- E** Grub screw with internal hexagon DIN 914



d_1 H8	Steel * blackened Type A Type E	Steel * zinc plated ZB Type E	Stainless Steel NI Type E	d_2	d_3	b js14
5	5	5	5	10	M 3 x 4	6
6	6	6	6	12	M 4 x 5	8
7	7	7	7	12	M 4 x 5	8
8	8	8	8	16	M 4 x 6	8
9	9	9	9	18	M 5 x 8	10
10	10	10	10	20	M 5 x 8	10
11	11	11	11	20	M 5 x 8	10
12	12	12	12	22	M 6 x 8	12
13	13	13	13	22	M 6 x 8	12
14	14	14	14	25	M 6 x 8	12
15	15	15	15	25	M 6 x 8	12
16	16	16	16	28	M 6 x 8	12
18	18	18	18	32	M 6 x 8	14
20	20	20	20	32	M 6 x 8	14
22	22	22	22	36	M 6 x 10	14
24	24	24	24	40	M 8 x 12	16
25	25	25	25	40	M 8 x 10	16
26	26	26	26	40	M 8 x 10	16
28	28	28	28	45	M 8 x 12	16



d_1 H8	Steel * blackened Type A Type E	Steel * zinc plated ZB Type E	Stainless Steel NI Type E	d_2	d_3	b js14
30	30	30	30	45	M 8 x 10	16
32	32	32	32	50	M 8 x 12	16
34	-	34	34	50	M 8 x 12	16
35	35	35	35	56	M 8 x 12	16
36	-	36	36	56	M 8 x 12	16
38	-	38	38	56	M 8 x 12	16
40	40	40	40	63	M 10 x 16	18
42	-	42	42	63	M 10 x 16	18
45	45	45	45	70	M 10 x 16	18
48	-	48	48	70	M 10 x 16	18
50	50	50	50	80	M 10 x 16	18
52	-	-	-	80	M 10 x 16	18
55	55	-	-	80	M 10 x 16	18
60	60	-	-	90	M 10 x 16	20
65	-	-	-	100	M 10 x 20	20
70	70	-	-	100	M 10 x 20	20
75	-	-	-	110	M 12 x 20	22
80	80	-	-	110	M 12 x 20	22

* The tolerances given in accordance with DIN 705 apply to blank set collars.
As a rule, the surface treatment has no detrimental effect on the proper function.



Set collars GN 705 → Page 856
 Semi-split set collars GN 706.2 → Page 858
 Split set collars GN 707.2 → Page 859
 Quick release set collars GN 704 → Page 863

Specification



- Steel blackened (Standard) —
- Steel zinc plated, blue passivated **ZB**
- Stainless Steel AISI 303 **NI**
- *ISO-Fundamental tolerances* → Page 1479
- *Stainless Steel characteristics* → Page 1489
- **RoHS**

Information

Set collars GN 705 essentially comply with the versions of DIN 705. GN 705 also contains a number of practical intermediate sizes in addition to the DIN-versions as well as Type E (grub screw with internal hexagon).

The clamping is done radially on the shaft or axle surface. Together with a dimpled hole or a groove at the collet diameter, the set collars can be positioned exactly and, at the same time, damage to the clamping point can be avoided.

see also...

- *Semi-split set collars GN 706.2* → Page 858

How to order (Steel, blackened) GN 705-20-A	1	d ₁
	2	Type

How to order (Steel, zinc plated) GN 705-10-E-ZB	1	d ₁
	2	Type
	3	Finish

How to order (Stainless Steel) GN 705-10-E-NI	1	d ₁
	2	Type
	3	Material

3.1
3.2
3.3
3.4
3.5
3.6
3.7
3.8
3.9

