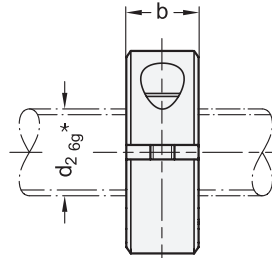
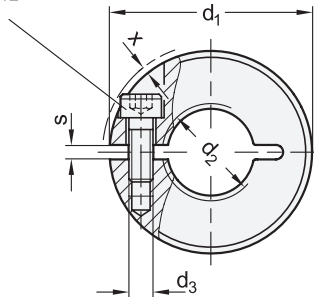



Socket cap screw  
DIN 912



\* recommended diameter tolerance



ROSTFREI  
Inox  
Stainless  
Steel

<b>1</b> $d_1$	<b>2</b> $d_2$ 6H		$b \pm 0,2$	$d_3$	$s$	$x \approx$ Max. protrusion of cap screw	Adjustable hand lever for $d_3$ 
20	M 8	M 8 x 1	9	M 3	2,1	1	-
22	M 10	M 10 x 1	9	M 3	2,1	0,8	-
26	M 12	M 12 x 1,5	11	M 4	2,1	1,6	-
32	M 16	M 16 x 1,5	11	M 4	2,1	0,7	GN 311-30-M4-12-SW
42	M 20	M 20 x 1,5	15	M 5	3	0,6	GN 311-30-M5-15-SW
48	-	M 24 x 1,5	15	M 5	3	0	GN 311-45-M5-16-SW
55	-	M 30 x 1,5	15	M 6	3	0,4	GN 311-45-M6-18-SW

**Specification**

- Steel **ST**
  - Sintered
  - Black oxidised with vapor
  - Socket cap screw DIN 912 Steel, plain
- Stainless steel AISI 316LHC **NI**
  - Sintered
  - Socket cap screw DIN 912 Stainless steel AISI 304
- Metric ISO Thread → Page 2149
- Metric ISO Fine Thread → Page 2148
- Stainless Steel Characteristics → Page 2166
- RoHS

**Accessory**

- Adjustable Hand Levers GN 311 → Page 1159
- Damping Washers GN 7062.30 → Page 1161

**3 Information**

Threaded shaft collars GN 706.3 correspond in outer dimensions to the semi-split shaft collars GN 706.2. The bore has, however, an internal thread so that the clamping ring can be screwed in like a nut, for instance, to a spindle thread in order to limit the adjustment range or the screw-in depth. The clamping is then done by reducing the slot height without damaging the thread.

The thread  $d_3$  for sizes  $d_1 = 20$  to 32 is designed as a through hole; for sizes  $d_1 = 42$  and larger, it is designed as blind hole.

see also...

- List of Shaft Collar Types → Page 1144
- Semi-Split Shaft Collars GN 706.2 → Page 1148

How to order (Steel)	<b>1</b> $d_1$
	<b>2</b> $d_2$
<b>GN 706.3-32-M16-ST</b>	<b>3</b> Material

How to order (Stainless steel)	<b>1</b> $d_1$
	<b>2</b> $d_2$
<b>GN 706.3-42-M20x1,5-NI</b>	<b>3</b> Material