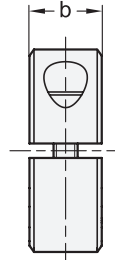
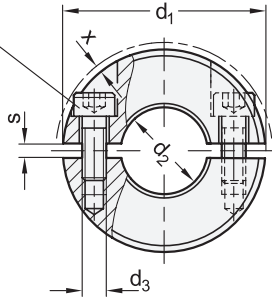


Socket cap screw
DIN 912



ROSTFREI
Inox
Stainless
Steel


3.1

3.2

3.3

1

2

d ₁	d ₂		b ±0,2	d ₃	s		x ≈ max. protrusion of cap screw	Adjustable hand lever for d ₃ 
	H10 for ST, NI, AL E8 for A4 recommended shaft tolerance h11				ST, NI, AL	A4		
20	B 6	-	9	M 3	2,1	1,6	1,2	-
22	B 8	-	9	M 3	2,1	1,6	1	-
26	B 10	-	11	M 4	2,1	1,6	1,6	-
30	B 12	-	11	M 4	2,1	1,6	0,7	GN 311-30-M4-12-SW
32	B 14	-	11	M 4	2,1	1,6	0,7	GN 311-30-M4-12-SW
36	B 15	B 16	13	M 5	2,1	1,6	1,4	GN 311-30-M5-13-SW
42	B 18	B 20	15	M 5	3	1,6	0,6	GN 311-30-M5-15-SW
48	B 22	B 25	15	M 5	3	1,6	0	GN 311-45-M5-16-SW
55	B 28	B 30	15	M 6	3	1,6	0,5	GN 311-45-M6-18-SW
60	B 32	B 35	15	M 6	4	1,6	0,4	GN 311-45-M6-19-SW
65	B 40	-	15	M 6	4	1,6	0,5	GN 311-45-M6-20-SW

3.4

3.5

3.6

Specification

- Steel **ST**
 - Sintered Steel (Distaloy AB)
 - black oxidised with vapor
 - Socket cap screw DIN 912 Steel, phosphated
- Stainless Steel **NI**
 - Sintered Steel AISI 316 LHC
 - Socket cap screw DIN 912-A2
- Stainless Steel **A4**
 - Turned version AISI 316 weldable
 - Socket cap screw DIN 912-A4
- Aluminum **AL**
 - ground
 - Socket cap screw DIN 912-A2
- ISO-Fundamental tolerances → Page 1480
- Stainless Steel characteristics → Page 1489
- RoHS

3

Information

Split shaft collars GN 707.2 correspond in measurement to the semi-split shaft collars GN 706.2. They are used when an axial assembly is not possible. They are used when the latter cannot be slipped over a shaft.

For size d₁ = 20 to 36 d₃ is a through hole; starting from d₁ = 42 d₃ is a threaded blind bore.

These shaft collars not only serve as an end stop, but they can also be used for fixing or triggering other components such as end limit switches.

3.7

3.8

Accessory

- Adjustable hand levers GN 311 → Page XYZ
- Damping washer GN 7072.30 → Page XYZ

How to order	1 d ₁
GN 707.2-65-B40-ST	2 d ₂
	3 Material



3.9