

Figure sequence **L**



Figure sequence **M**



Figure sequence **R**



Figure sequence **U**



Figure sequence **M**

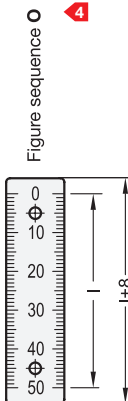


Figure sequence **O**

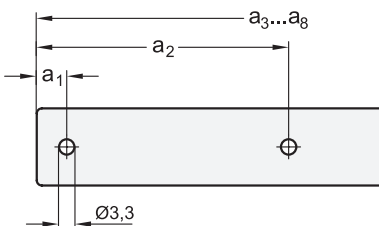
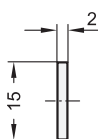
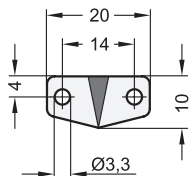


3 Type

W Figures horizontally arranged (Figure sequences L, M, R)

S Figures vertically arranged (Figure sequences U, M, O)

GN 711.3



5 Identification no.

1 with mounting holes $\varnothing 3,3$

Length Scale	Number of bores	$a_1 \pm 0,1$ Figure sequence		$a_2 \pm 0,1$ Figure sequence		$a_3 \pm 0,1$ Figure sequence		$a_4 \pm 0,1$ Figure sequence		$a_5 \pm 0,1$ Figure sequence		$a_6 \pm 0,1$ Figure sequence		$a_7 \pm 0,1$ Figure sequence		$a_8 \pm 0,1$ Figure sequence	
		M	L/R O/U	M	L/R O/U	M	L/R O/U	M	L/R O/U	M	L/R O/U	M	L/R O/U	M	L/R O/U	M	L/R O/U
50	2	4	9	54	49	-	-	-	-	-	-	-	-	-	-	-	-
100	2	9	9	99	99	-	-	-	-	-	-	-	-	-	-	-	-
150	2	4	9	154	149	-	-	-	-	-	-	-	-	-	-	-	-
200	3	9	9	99	99	199	199	-	-	-	-	-	-	-	-	-	-
300	3	9	9	149	149	299	299	-	-	-	-	-	-	-	-	-	-
400	4	9	9	139	139	269	269	399	399	-	-	-	-	-	-	-	-
500	4	9	9	169	169	339	339	499	499	-	-	-	-	-	-	-	-
750*	8	4	9	124	129	254	249	374	369	394	389	504	509	634	629	754	749
1000*	8	9	9	169	169	339	329	499	499	519	519	679	679	839	839	999	999

* These lengths consists of 2 parts.

Specification

- Aluminum **AL**
 - natural color anodized
 - black imprint with numbers and scale etched (i.e., Aluminum colored)
- Imprint resistant to weak acids and lye solutions, and against solvents in the event of brief contact
- RoHS

On request

- self-adhesive version

Information

The position of linear actuator connectors can be easily read from GN 711.2 rulers. With GN 711.3 reference arrows, reference points can be marked on rulers or reference positions in machines.

How to order (Ruler)

GN 711.2-AL-100-W-L-1

- Material**
- Length I**
- Type**
- Figure sequence**
- Identification no.**

How to order (Indicator arrow)

GN 711.3-AL-1

- Material**
- Identification no.**