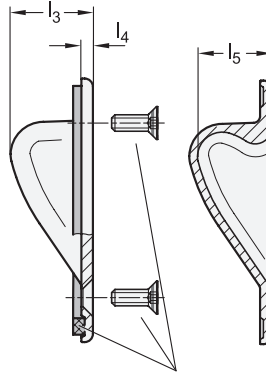
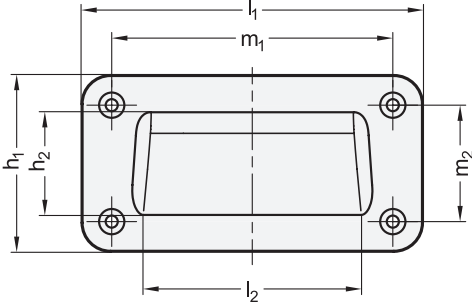


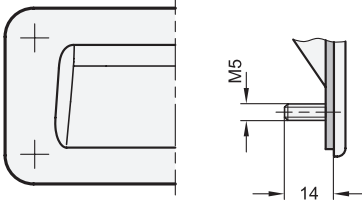
Type A



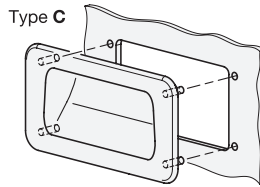
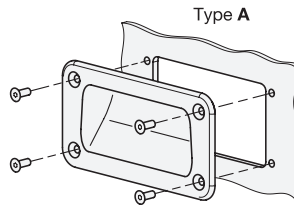
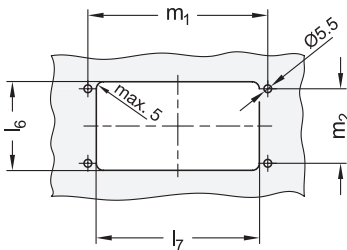
Countersunk sealing screws / Housing seal (for identification no. 2)



Type C



Mounting cut-out



2 Type

- A** Mounting from the operator's side (for identification no. 2 with four countersunk sealing screws)
- C** Mounting from the back

3 Identification no.

- 1** Without Seal
- 2** With seal

1

l_1	h_1	h_2	l_2	l_3	l_4	l_5	$l_6 +1$	$l_7 +1$	m_1	m_2
127	80	43	72	25	3,5	22,5	60	88	100	53
155	80	43	99	25	3,5	22,5	60	115	128	53

Specification

Handle

- Zinc die casting
- Powder coated
- Black, RAL 9005, textured finish
- Silver, RAL 9006, textured finish

- **SW**
- **SR**

Housing seal for identification no. 2

- Rubber NBR
- Black
- Glued

Countersunk sealing screws for type A, id. no. 2

- DIN 7991-M5x16
- Stainless steel
- Polyamide coating on head

Grub screws for type C

- Stainless steel
- Molded-in

Protection class IP 66

RoHS

Gripping trays GN 7330 can be easily and quickly installed from the front using countersunk screws or from the back with grub screws.

Gripping trays with housing seal (identification no. 2) prevent the penetration of any dirt or liquids into the housing interior. Type A is supplied with four additional countersunk sealing screws, which feature a polyamide coating on the head to create a tight seal.

see also...

	Page
GN 7332 Gripping Trays (Stainless Steel)	QVX
GN 733 Gripping Trays (Plastic, Screw-In Type)	QVX
GN 731 Gripping Trays (Plastic, Clip-In Type)	QVX

Technical Information

IP Protection Classes	QVX
Stainless Steel Characteristics	QVX

How to order

GN 7330-127-A-2-SW

1	l_1
2	Type
3	Identification no.
4	Finish