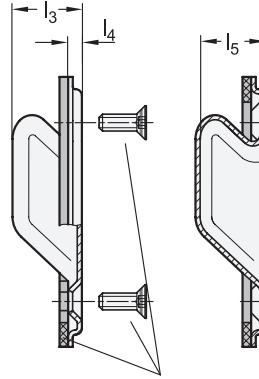
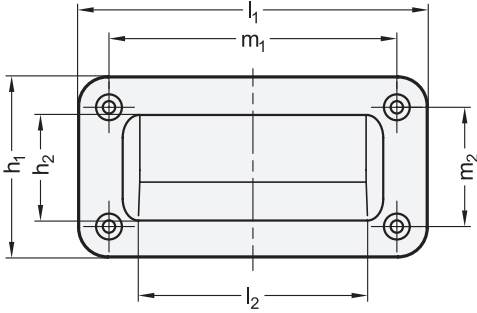
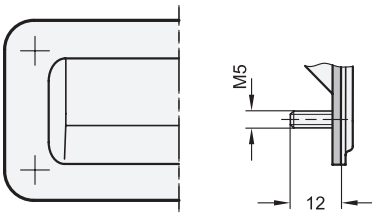


Type A

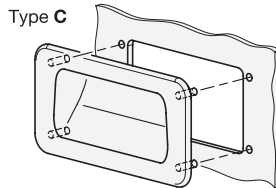
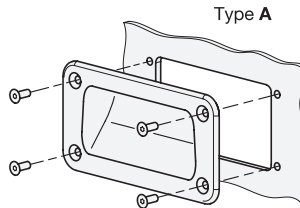
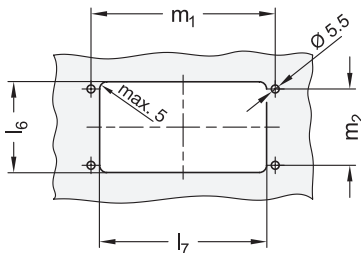


Type C



Countersunk sealing screws / Housing seal (for identification no. 2)

Mounting cut-out



2 Type

- A Mounting from the operator's side (for identification no. 2 with four countersunk sealing screws)
- C Mounting from the back

3 Identification no.

- 1 Without Seal
- 2 With seal, black
- 3 With seal, blue (only type C)

1

l_1	h_1	h_2	l_2	l_3	l_4	l_5	$l_6 +1$	$l_7 +1$	m_1	m_2
155	80	42	109	20	3,5	19,2	60	115	128	53

Specification

Handle

- Stainless steel AISI 304
- Matte shot-blasted finish
- Electropolished

GS EP

Housing seal

- Rubber, glued
- NBR, black for identification no. 2
- Silicone, blue for identification no. 3
- FDA compliant

Countersunk sealing screws for type A, id. no. 2

- DIN 7991-M5x16
- Stainless steel
- Polyamide coating on head

Grub screws for type C

- Stainless steel AISI 304
- Welded

Protection class IP 66

RoHS

Gripping trays GN 7332 can be easily and quickly installed from the front using countersunk screws or from the back with grub screws.

Gripping trays with housing seal (Identification no. 2 and 3) prevent the penetration of any dirt or liquids into the housing interior. The FDA-compliant version also allows use in areas where food or pharmaceutical products are produced.

Type A is supplied with four additional countersunk sealing screws, which feature a polyamide coating on the head to create a tight seal.

see also...

GN 733 Gripping Trays (Plastic, Screw-In Type)	Page QVX
--	----------

Technical Information

IP Protection Classes	QVX
Stainless Steel Characteristics	QVX

How to order

GN 7332-155-A-2-GS

1	l_1
2	Type
3	Identification no.
4	Finish

