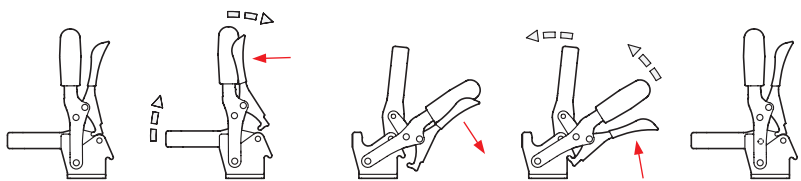


**2 Type**

- UL** Clamping arm extended, with slotted hole and with two flanged washers
- ULC** Clamping arm extended, with slotted hole, two flanged washers and clamping screw GN 708.1

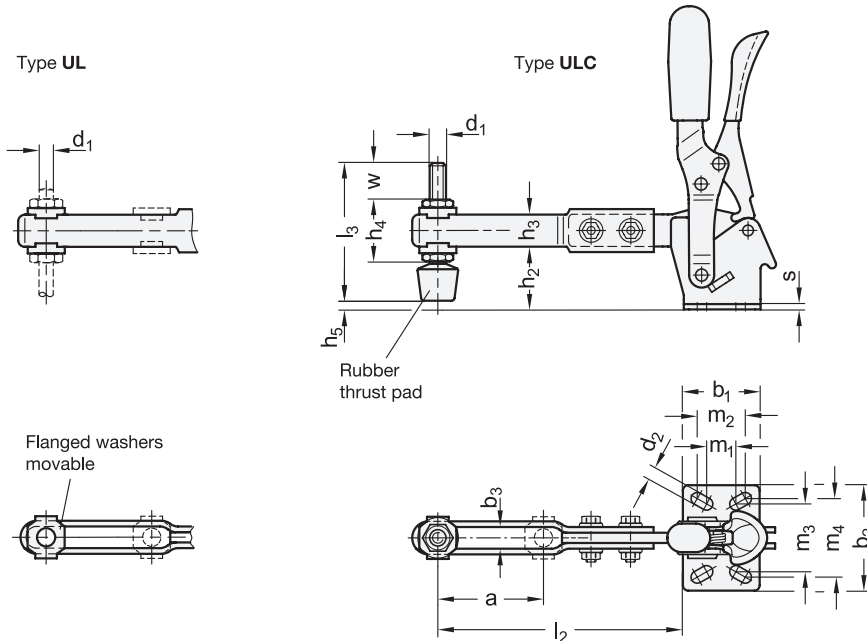
**Operating principle**



**1**

Size	F <sub>H</sub> in N Holding capacity	a ≈	b <sub>1</sub>	b <sub>2</sub>	b <sub>3</sub>	d <sub>1</sub>	d <sub>2</sub> ≈	h <sub>1</sub> ≈	h <sub>2</sub>	h <sub>3</sub>	h <sub>4</sub>	h <sub>5</sub> max.
130	500	67,5	35	42	6,3	M 6	5,5	142	28	16	25,5	11,3
230	1000	71,5	43	45	8,2	M 8	6,5	168	33,5	18	30	9,5

Size	l <sub>1</sub> ≈	l <sub>2</sub> ≈	l <sub>3</sub>	m <sub>1</sub>	m <sub>2</sub>	m <sub>3</sub>	m <sub>4</sub>	r ≈	s	w Adjustable range
130	164	121	55	12,5	19	27	29	158	2,5	17,5
230	198	145,5	68	19,5	19,5	32	32	191	3	20



## Specification

### Tensioning mechanism

- Steel
- Sheet metal parts
  - Case-hardened steel C10, zinc plated, blue passivated
- Bearing pins tempered
- Bearing rivets case-hardened
- Moving parts lubricated with special grease

### Handle

- Plastic
- Red, oil resistant

### Flanged washers GN 898

- Steel
- Zinc plated, blue passivated

### Clamping screws GN 708.1 for type ULC

- Steel
- Zinc plated, blue passivated
- Rubber tip
  - 85 Shore A
  - Type A (flat pressure area)

RoHS

Toggle clamps GN 810.3 are latched in both end positions. In the clamped position, this prevents unintentional opening or opening caused by vibrations; and in the open position, it prevents self-closing of the toggle clamp, such as due to an extended clamping arm. The latching can be disabled with a single hand to allow for opening / closing.

They work according to the toggle principle: lever and clamping bar move in the same direction. In the clamped position the operating lever is in its vertical position.

Toggle clamps in the U-bar version with two flanged washers (type UL) can accommodate an application specific clamping screw. A clamping screw with neoprene rubber tip is also included for type ULC.

see also...

	Page
<b>GN 810.10</b> Toggle Clamps („Longlife“)	QVX
<b>GN 810.4</b> Toggle Clamps (with Vertical Mounting Base, with Extended Clamping Arm)	QVX

### Technical Information

General Information for Toggle Clamps	QVX
---------------------------------------	-----

### Accessory

Clamping Screws	QVX ff.
<b>GN 801</b> Holders for Clamping Screws	QVX
<b>GN 801.1</b> Clamping Arm Extenders	QVX
<b>GN 801.2</b> Clamping Arm Extenders	QVX

How to order

**GN 810.3-230-UL**

- |   |      |
|---|------|
| 1 | Size |
| 2 | Type |