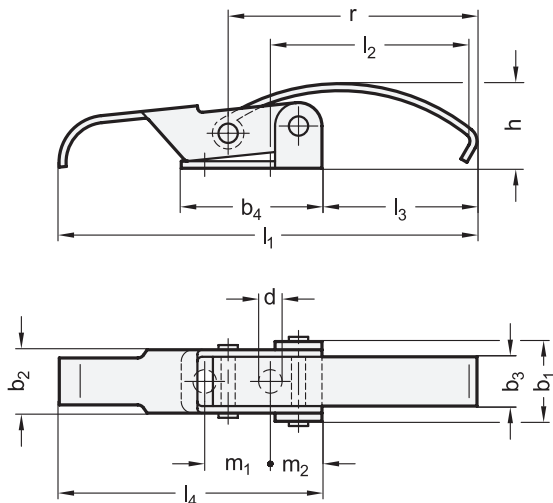




ROSTFREI
Inox
Stainless
Steel



Size	F _H in N Holding capacity	b ₁	b ₂	b ₃	b ₄	d	h ±1
50	500	17	13,5	10	30	5,1	18

Size	l ₁	l ₂ ±0,5	l ₃	l ₄	m ₁	m ₂	r
50	89	43	33	56	14	11	53

Specification

- Steel **ST**
zinc plated, blue passivated
- Stainless Steel AISI 304 **NI**
- *Stainless Steel characteristics* → Page 1489
- RoHS



Information

GN 833 toggle latches are used for the secure holding of flaps, container lids, machine coverings and similar applications. The clamping stroke exceeds the dead centre point which makes them vibration proof. Due to the elasticity of the U-bolt latch the components to be linked are held in position.

The loads specified in the above table are simply guide line values for a nominal static pulling force which the lock can withstand. The clamping strength may be decreased depending on the application conditions, such as in the case of sudden dynamic loads.

Socket head cap screws with low-profile head or oval head screws are recommended for mounting due to space requirements.

How to order

GN833-50-ST

1	Size
2	Material

