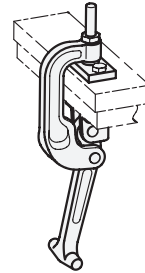


Examples of application



3 Type
C2 for screwing

Clamping screw GN 802



1 **2**

h_1 max.	l_1	F_H in N Holding capacity	b_1	b_2	d_1	d_2	h_2	h_3	h_4	l_2	l_3	l_4	l_5	l_6	m	w_1 Stroke	w_2 Adjustable range
40	32	15000	60	26	M 10	8,5	111	168	129	30	18	72	168	173	45	19	32
75	32	15000	60	26	M 10	8,5	146	168	164	30	18	72	168	207	45	19	32

Specification

- Clamping bracket / Clamping lever
Steel
- Forged
- Blackened
- Bearing flange
Sheet steel, blackened
- Clamping screw / nut
Steel, blackened
- Counter plate / bearing pin
Steel, blackened
- RoHS

Accessory

- Clamping Screws GN 802 → Page 813

Information

C-Clamps GN 855 feature an especially robust, sturdy and compact design, allowing them to be used under severe and demanding conditions, e.g. higher temperatures, dust, mist, etc.

The C-Clamps are normally installed and mounted at the clamping point. The counter plate (supplied loose) has a ball socket and is designed for attaching to the counter piece to be clamped. In connection with the ball-type bolt, this configuration ensures the precise positioning of the latch clamp.

If the counter plate is not to remain at the counter piece to be clamped, the clamping bracket may alternatively also be used to hold clamping screws GN 802 which have a pendulum-type bearing surface.

see also...

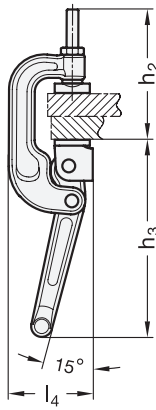
- Grub Screws DIN 6332 → Page 1065
- Thrust Pads GN 6311.1 → Page 1069

How to order

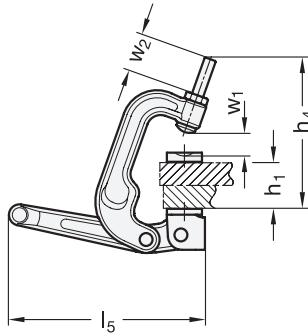
GN 855-40-32-C2

- 1** Clamp width
- 2** Clamping height
- 3** Type

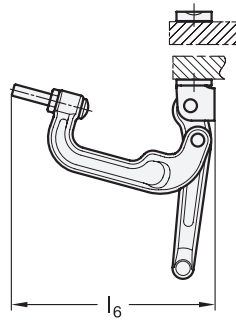
C-Clamp, closed



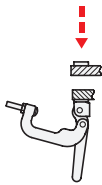
C-Clamp, loosened



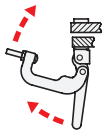
C-Clamp, opened



Description of function



Place the pieces to be clamped into the clamping position, e.g. close the lid or place the piece to be clamped on top.



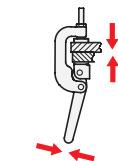
Then move the clamping bracket and the clamping lever of the C-Clamp upwards.



Now move the clamping bracket forward such that the clamping bolt is located in the ball socket of the counter plate.



Move the clamping lever downwards until the clamping force has exceeded the dead point.



When closed, the C-Clamp now holds its position on its own.

1.1
1.2
1.3
1.4
2.1
2.2
2.3
2.4

