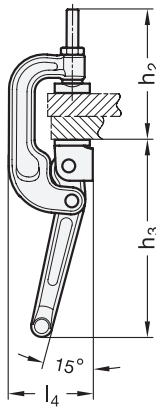
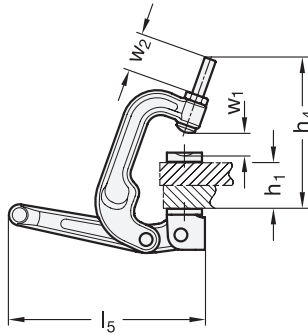


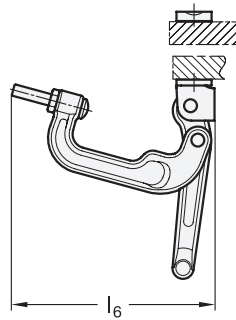
C-Clamp, closed



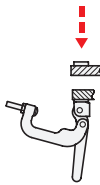
C-Clamp, loosened



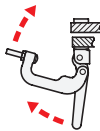
C-Clamp, opened



Description of function



Place the pieces to be clamped into the clamping position, e.g. close the lid or place the piece to be clamped on top.



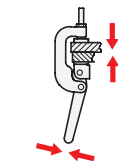
Then move the clamping bracket and the clamping lever of the C-Clamp upwards.



Now move the clamping bracket forward such that the clamping bolt is located in the ball socket of the counter plate.



Move the clamping lever downwards until the clamping force has exceeded the dead point.



When closed, the C-Clamp now holds its position on its own.

1.1

1.2

1.3

1.4

2.1

2.2

2.3

2.4

