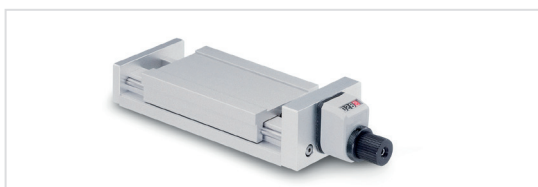
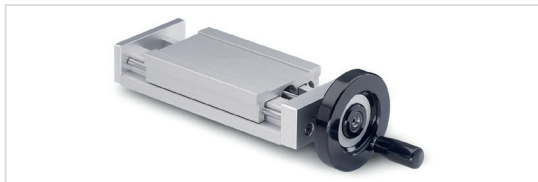




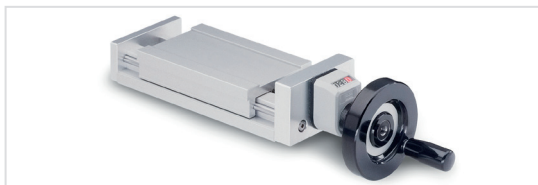
Specifications with Control knob (Type D)



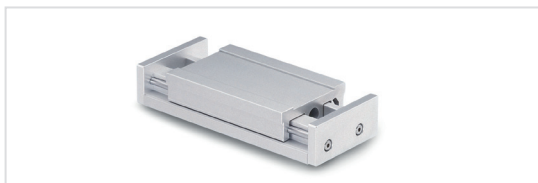
Specifications with Control knob and position indicator (Type DN / DR)



Specifications with handwheel (Type H)



Specifications with handwheel and position indicator (Type HN / HR)



Specifications without adjustable spindle (Type S)
for manual or pneumatic operation

Description

The adjustable slide units GN 900 are a work holding system which can accommodate almost any type of application.

Four standard sizes are available with different slide widths i.e. 30, 50, 80 and 120 mm which again cover almost a full specific range of applications.

As standard for each slide width there are externally guided slides with different openings. The design of these adjustable slide units can accommodate outside components.

These adjustable slide units can be combined with a range of adaptor components to bring the adjustable slide unit into any required position whether horizontal, vertical or any other angular position for machining operations. A unique clamping technique (design features page 1936) allows simple and rapid workpiece clamping.

All components are in Aluminum, stainless steel and plastic material which makes the adjustable slide units with control knob (Type D) a corrosion free unit.

A range of different operating features with or without digital position indicators is also available. In addition there is a range of other accessories.

Other features

- slides in anodized Aluminum
- high load ratings
- favourable friction values
- high quality slideways by virtue of the anodized surface hardness
- backlash free shaft adjustment
- fine adjustment to 0,05 mm
- scale rings with zero position
- adjustable clamping levers to suit the positioning of the slides

Application examples

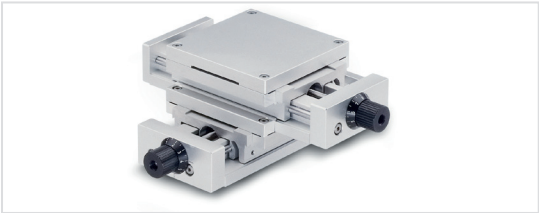
- Precision positioning of soldering / welding heads
- Adjustment of inkjet printers
- Adjustment of measurement cameras
- Adjustment of laser heads
- Re-adjustment of back stops
- Adjustment of sensors

The manually operated rotary table GN 900.6 is a positioner which extends the range of applications for the adjustable slide units considerably.

This rotary table can, of course, also be used without the adjustable slide units.



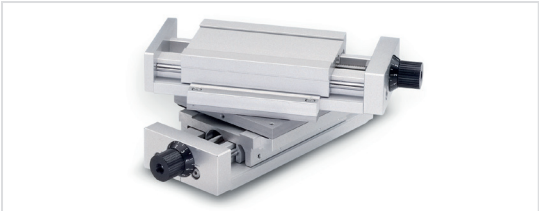
The adjustable assembly X-Y consisting of two adjustable slide units GN 900 and an X - Y connecting set GN 900.2 with a mounting plate GN 900.4.



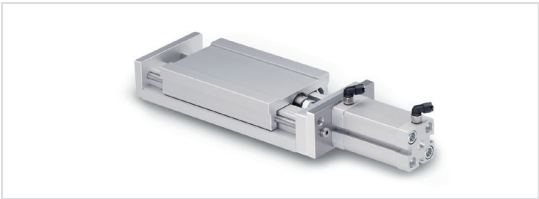
The adjustable assembly X-Y-Z consisting of three adjustable slide units GN 900, X- and Z-axis with position indicator, plus rotary table GN 900.6 mounted on Z-axis, assembled on mounting plate GN 900.4.



The adjustable assembly X-Y consisting of two adjustable slide units GN 900, Y-axis with rotary plate GN 900.5 positioned at a horizontal cross angle of 120°.



Adjustable slide unit type S with a mounted pneumatic cylinder.



3.1

3.2

3.3

3.4

3.5

3.6

3.7

3.8

3.9

