

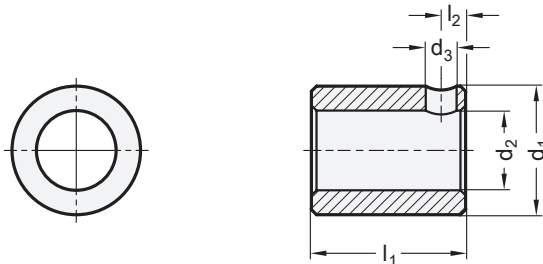


elesa

Original design RB50 / RB51 / RB52



Inox
Stainless
Steel



¹ d ₁ f7	² d ₂ H7							³ l ₁	d ₃	l ₂	For position indicators
10	B 6	B 8	-	-	-	-	-	20	3,2	2,5	GN 955 / GN 955.2
14	B 6	B 8	B 10	B 12	-	-	-	20	4,25	3,5	GN 954 / GN 954.2 / GN 9054
20	B 6	B 8	B 10	B 12	B 14	B 15	B 16	20	5,5	4,5	GN 953 / GN 953.2 / GN 9053 / GN 9153

Specification

Bushing

- Steel, blackened
- Stainless steel AISI 304



NI

Grun screw DIN 916

Stainless steel
with internal hex and serrated point

RoHS

With the help of adapter bushings GN 952.1 position indicators can be adapted to accept different smaller spindle diameters. The adapter bushings are supplied with a set screw.

see also...

Page

- GN 953 | GN 953.2 Position Indicators (Hollow Shaft Steel / Stainless Steel) QVX / QVX
- GN 954 | GN 954.2 Position Indicators (Hollow Shaft Steel / Stainless Steel) QVX / QVX
- GN 955 | GN 955.2 Position Indicators (Hollow Shaft Steel / Stainless Steel) QVX / QVX
- GN 9053 | GN 9054 Position Indicators (Electronic) QVX / QVX
- GN 9153 | GN 9154 Position Indicators (Data Transmission via Radio Frequency) QVX / QVX

Technical Information

ISO Fundamental Tolerances

QVX

Stainless Steel Characteristics

QVX

How to order (Steel)

¹ ² ³
GN 952.1-14-B12-20

- ¹ d₁
- ² d₂
- ³ l₁

How to order (Stainless steel)

¹ ² ³ ⁴
GN 952.1-10-B8-20-NI

- ¹ d₁
- ² d₂
- ³ l₁
- ⁴ Material

1.1
1.2
1.3
1.4
2.1
2.2
2.3
2.4

