

### Installation instructions

Before installation of the position indicator a bore for the torque limiting contact point is to be placed (see left).

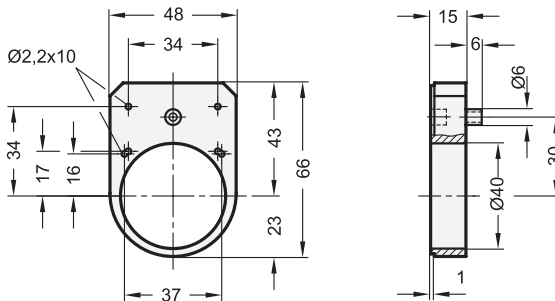
With the **adapter bushings GN 952.1** → Page 306, the hollow shaft (with Bore 20 H7) of the position indicator can be adapted to fit the spindle.

The mounting of the position indicator is via the torque limiting contact point which is connected to the hollow spindle and secured with a grub screw.

Before completing the installation, turn the spindle to the starting point (0) position and zero the position indicator.

With **clamping plates GN 953.6** → Page 308, spindles can be clamped and secured after adjusting.

## GN 953.1 | Spacer plate



ELESA Original design BS52R

### Specification

- Plastic (Polyamide PA)  
black, matte
- RoHS

### Information

The previous position indicators GN 952 are replaced by position indicators GN 953, they are dimensionally reduced compared to GN 952.

The spacer plate GN 953.1 is used as adapter in case the dimensions on the machine body are applied to match the previous model GN 952.

The bore holes Ø 2,2 are used for the machine-side fastening with e.g. socket button head self-tapping screws in accordance with DIN ISO 7049.

How to order  
**GN 953.1**