

GN 954

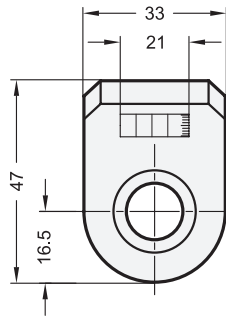
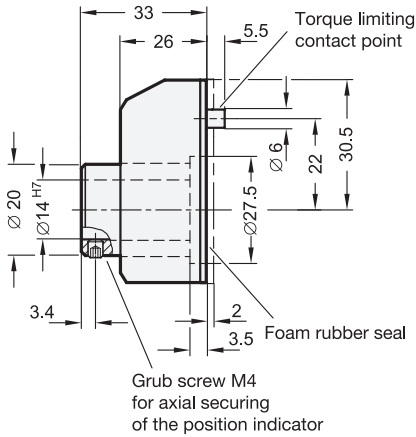
Hollow Shaft Steel

GN 954.2

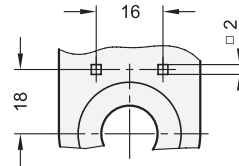
Hollow Shaft Stainless Steel

Position Indicators

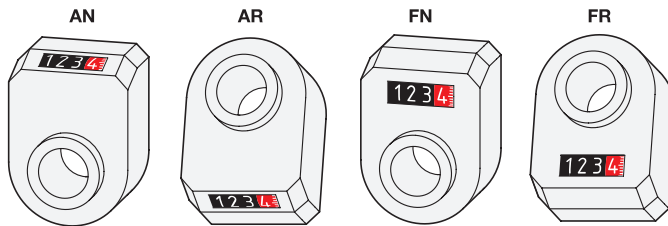
4 Digits, Digital Indication, Mechanical Counter



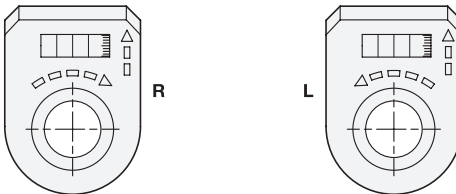
View from the rear side
Retainer to square, 5 mm depth



Display position



Counting direction



elesa

Original design DD51 / DD51.SST



Inox
Stainless
Steel

2 Display position

- AN** On the chamfer, above
- AR** On the chamfer, below
- FN** In the front, above
- FR** In the front, below

3 Counting direction

- R** Digits ascending clockwise
- L** Digits ascending anti-clockwise



Counter

Indication after one spindle revolution

0000	0000	0000	0000	corresponds to thread pitch	max. revolutions per minute
0010	001.0	00.10	0.010	1	1500
00125	001.25	00.125	0.0125	1,25	1500
0015	001.5	00.15	0.015	1,5	1500
0020	002.0	00.20	0.020	2	1250
0025	002.5	00.25	0.025	2,5	1000
0030*	003.0*	00.30	0.030	3	830
0040**	004.0**	00.40	0.040	4	625
0050	005.0	00.50	0.050	5	500
0060	006.0	00.60	0.060	6	415
0080	008.0	00.80	0.080	8	315
0100	010.0	01.00	0.100	10	250

* Suitable for linear actuators GN 291 ff. Ø 18 ** Suitable for linear actuators GN 291 ff. Ø 30

Installation instructions and Accessory

<p>When mounting the position indicator, an appropriately situated mounting hole is required for the torque support.</p>	<p>If the position indicator is used with smaller shaft diameters, the hollow shaft diameter $\varnothing 10\text{ H7}$ can be reduced with adapter bushings GN 952.1 (\rightarrow Page XYZ).</p>
<p>Clamping plates GN 954.7 (\rightarrow Page XYZ) can be used to clamp spindles after adjustment to secure them against independent or accidental turning.</p>	<p>If reduction is desired in addition to installation of a control knob, control knobs GN 957 (\rightarrow Page XYZ) are available, which combine both functions in a single element.</p>

Specification

Housing

Plastic, polyamide (PA)

- Color
 - Orange, RAL 2004, shiny finish ● **OR**
 - Gray, RAL 7035, shiny finish ● **GR**
 - Black-gray, RAL 7021, shiny finish ● **SG**
- Operating temperature 0 °C to +80 °C
- Oil and solvent resistant

Sight glass

Plastic, polyamide (PA-T), transparent

Counter

- Digits white
- Pre-decimal positions highlighted black
- Decimal positions highlighted red with additional scale

GN 954

- Hollow shaft
 - Steel, blackened
 - Sealed with an O-ring
- Grub screw DIN 916
 - Steel, blackened

GN 954.2

- Hollow shaft
 - Stainless steel AISI 303
 - Sealed with an O-ring
- Grub screw DIN 916
 - Stainless steel

RoHS

On request

- Other counter indication
- Position indicators GN 954 with locking lever

Position indicators GN 954 / GN 954.2 have a directly driven counter with digital position indication. The digits are easy to read and appear enlarged due to the magnifying effect of the viewing window.

Both housing sections are ultrasonically welded, making the housing particularly stable and compact. The foam rubber seal prevents the transmission of vibration to the counter and serves as a seal.

Technical Information

Technical Information	Page
Further information for position indicators	QVX
ISO Fundamental Tolerances	QVX
Plastic Characteristics	QVX
Stainless Steel Characteristics	QVX

Accessory

GN 952.1 Adapter Bushings	QVX
GN 954.1 Spacer Plate	QVX
GN 954.7 Clamping Plates	QVX
GN 957 Control Knobs	QVX
GN 957.1 Control Knobs	QVX

How to order (Hollow shaft steel)

❶ ❷ ❸ ❹
GN 954-001.0-FN-R-GR

- | | |
|----------|--------------------|
| 1 | Counter |
| 2 | Display position |
| 3 | Counting direction |
| 4 | Color |

How to order (Hollow shaft stainless steel)

❶ ❷ ❸ ❹
GN 954.2-005.0-AN-L-OR

- | | |
|----------|--------------------|
| 1 | Counter |
| 2 | Display position |
| 3 | Counting direction |
| 4 | Color |

1.1 1.2 1.3 1.4 2.1 2.2 2.3 2.4

