

Installation instructions

Before installation the position indicator, a locating hole must be made on the machine side for the torque limiting contact point, according to the drawing (see left).

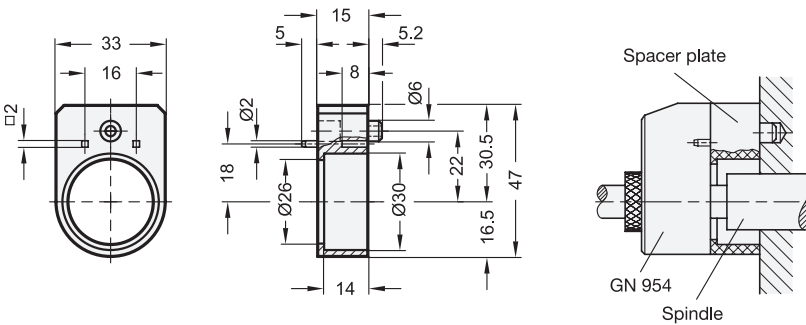
With the **adapter bushings GN 952.1** (→ Page 412), the hollow shaft (with bore 14 H7) of the position indicator can be adapted to fit the spindle.

If a reduction in the diameter of the hollow shaft is to be made at the same time as mounting a control knob, **control knobs GN 957** (→ Page 413) are available which combine both functions in a single component.

The mounting of the position indicator is via the torque limiting contact point which is connected to the hollow spindle and secured with a grub screw.

With **clamping plates GN 954.6** (→ Page 414), spindles can be clamped and secured after adjusting.

GN 954.1 | Spacer Plate



Specification

- Plastic (Polyamide PA)
Black, matte finish
- RoHS

Information

The spacer plate GN 954.1 in combination with the position indicators GN 954 are used to bridge the shaft shoulders, set collars and so on.

The square bore holes are used for the machine-side fastening with e.g. socket button head self-tapping screws in accordance with DIN ISO 7049.

How to order

GN 954.1