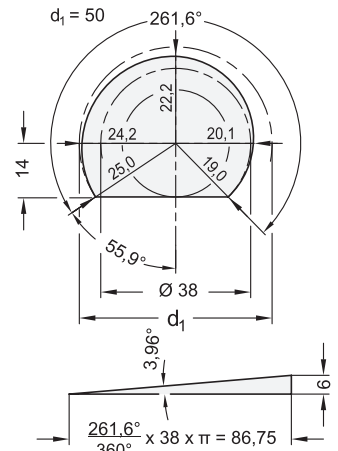
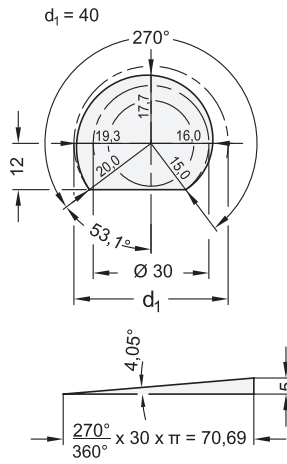
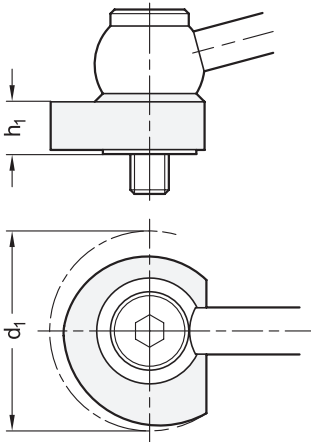
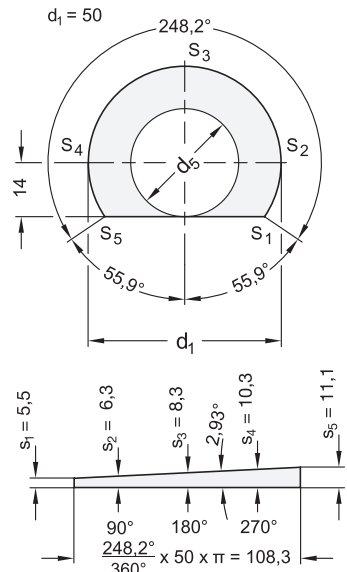
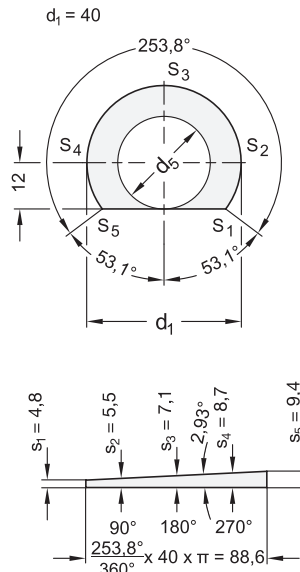
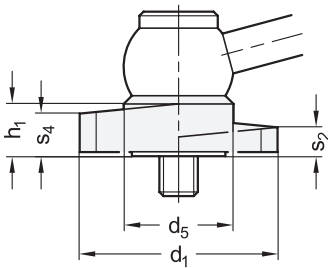


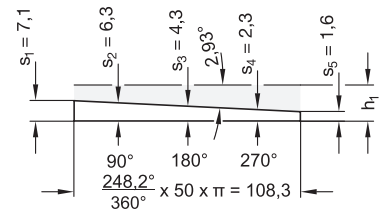
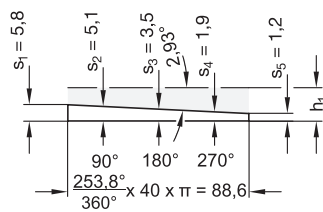
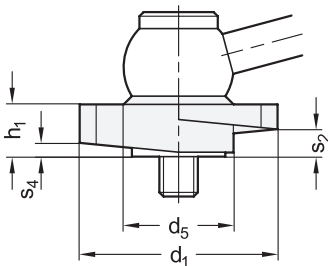
GN 918 / GN 918.5



GN 918.1 / GN 918.6



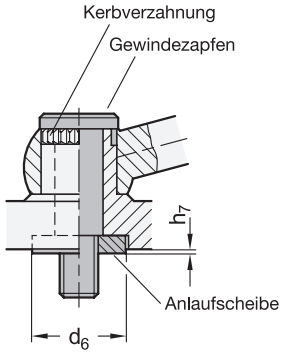
GN 918.2 / GN 918.7



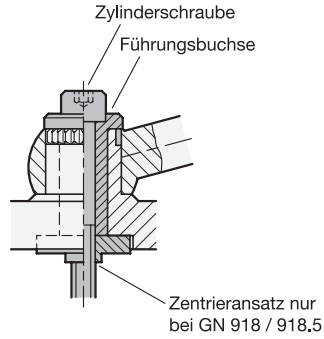
Auf den Zeichnungen ist beispielhaft die Form KV mit Spannrichtung R (durch Rechtsdrehung) dargestellt.

Konstruktionshinweise

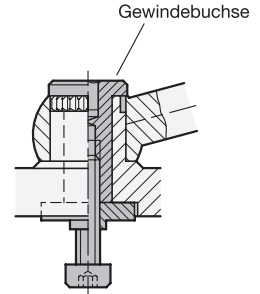
Form **GV / KV / SK**



Form **GVS / KVS / SKS**

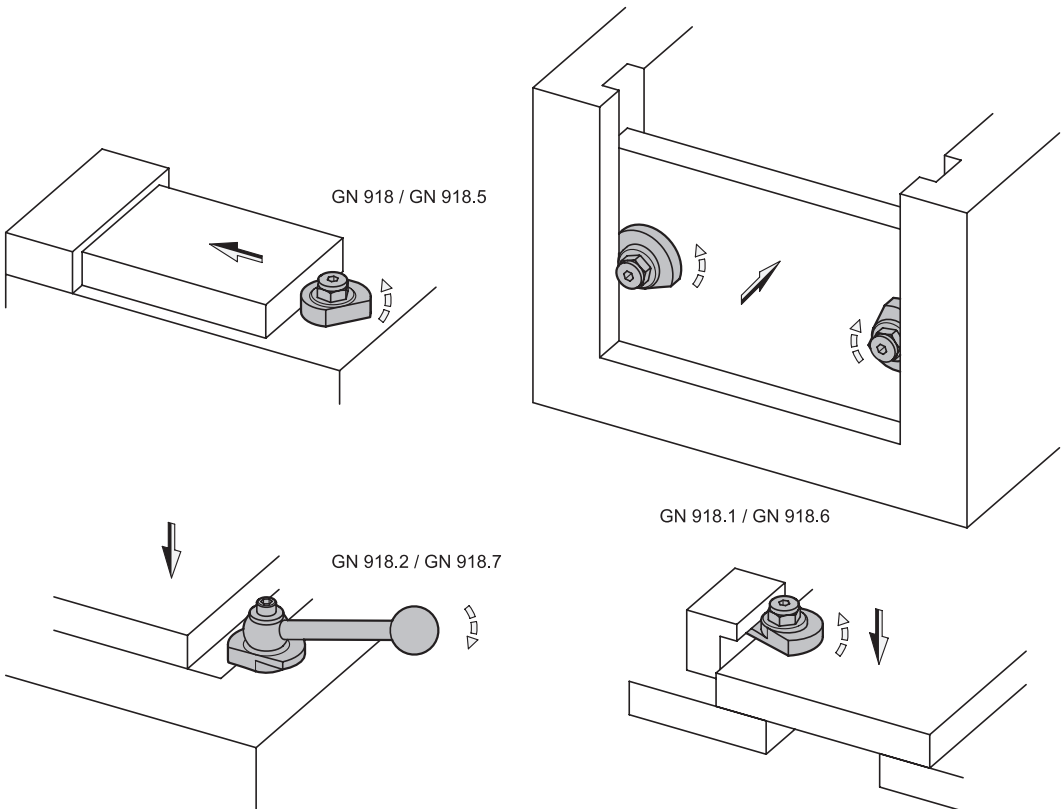


Form **GVB / KVB / SKB**



d_1	d_6	$h_7 \approx$
40	20	0,2
50	24	0,2

Anwendungsbeispiele



1.1
1.2
1.3
1.4
2.1
2.2
2.3
2.4



Spiralexzenter / Spannriegel

Montagehinweise GN 918 ... GN 918.7

