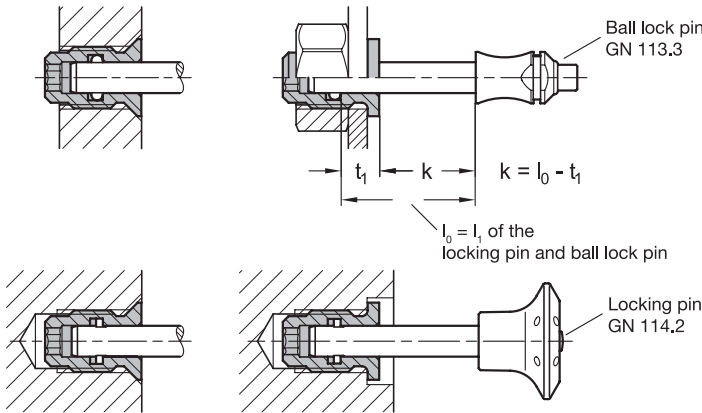


Application examples



- 3 Type**
- B** With collar
 - S** With countersunk head

1 d_1	2 d_2	d_3	d_4	d_5	d_6	$l_1 \approx$	l_2	l_3	A/F	t_1	t_2	t_3
5 $^{+0,10}_{-0,02}$	M 12	16	18	9,4	6,5	16,5	21	2	4	10	1,5	17,5
6 $^{+0,10}_{-0,02}$	M 14	18	20	11,4	8,2	17,5	23	2	5	10	2,5	18,5
8 $^{+0,10}_{-0,02}$	M 16	20	22	13	11,1	19,5	25	3	6	10	3	20,5
10 $^{+0,15}_{-0,05}$	M 20	25	27	16,4	13,4	21,5	28	3	8	10	4	22
12 $^{+0,15}_{-0,05}$	M 24	30	32	19,6	15,4	29,5	39	4	10	20	5	33,5
16 $^{+0,15}_{-0,05}$	M 30	36	38	25	20,3	33,5	43	4	10	20	7	36,5

4 Specification

Stainless steel AISI 303 **NI**

RoHS

Technical Information

Page

List of Lock Pin Types	QVX
Plastic Characteristics	QVX
Stainless Steel Characteristics	QVX

Holding bushings GN 1140 are designed for ball lock pins, such as GN 113.3, or locking pins GN 114.2. They are used when the existing wall thickness is thin or for installation in a blind hole. They also provide reinforcement when the locking pin or ball lock pin is used with soft, sensitive materials. Type B establishes a defined screw-in depth due to the collar. Type S with countersunk head allows for centered, flush installation in an easily created hole.

The holding bushings fit the following locking pins and ball lock pins: GN 113.3, GN 113.4, GN 113.5, GN 113.6, GN 113.7, GN 113.8, GN 113.9, GN 113.10, GN 113.11, GN 113.12, GN 113.30, GN 114.2, GN 114.3, GN 114.6, GN 124.2, GN 124.3, GN 214.2, GN 214.3, GN 214.6

How to order

GN 1140-10-M20-S-NI

1	d_1
2	d_2
3	Type
4	Material

3.1
3.2
3.3
3.4
3.5
3.6
3.7
3.8
3.9
3.10