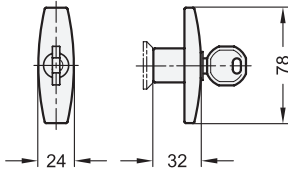
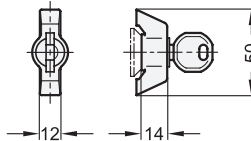


Type SCT / SUT



Type SCK / SUK



- 1 Type**
- SC** With key (same lock)
 - SU** With key (different lock)
 - SCK** With wing knob (same lock)
 - SUK** With wing knob (different lock)
 - SCT** With T-handle (same lock)
 - SUT** With T-handle (different lock)

- 3 Version of the hook**
- H1** Pivoting radius R=28

- 5 Identification no.**
- 1 Without latch bracket
 - 2 With latch bracket

Hook distance A	d Type SC / SU	Type SCK / SUK / SCT / SUT	h
18	28	32	6

* Dimensions of the latch bracket → Page XYZ

Specification

Lock housing

Zinc die casting

Housing collar

- Chrome plated ● CR
- Powder coated ● SW
- Black, RAL 9005, textured finish

Operating element

for type SCK / SUK / SCT / SUT
Plastic, Polyamide (PA)
Black, matte finish

Other parts

Steel
Zinc plated, blue passivated

Key

Nickel silver with plastic handpiece

Protection class IP 65

for type SCK / SUK / SCT / SUT

RoHS

On request

- Hook-type latches with other hook distance A
- Hook with other pivoting radius R

Hook-type latches GN 115.8 with hook and latch bracket are mainly used for sliding doors and flaps. The locking action is in radial direction to the axis of rotation, resulting in a wide variety of different uses.

The latches are delivered with 2 keys and loosely enclosed hook. The key can be removed in both end positions.

Types with a standard lock allow every lock to be opened with the same key. For the types with different lock, there are more than 200 different lock variants, whose keys are marked by numbers.

see also...

	Page
GN 115.8 Hook-Type Latches (with Operating Element)	QVX

Technical Information

Construction and assembly instructions	QVX
Overview Latch Types	QVX
IP Protection Classes	QVX
Plastic Characteristics	QVX

How to order

1 Type
2 Hook distance A
3 Version of the hook
4 Finish housing collar
5 Identification no.

GN 115.8-SC-18-H1-SW-1