

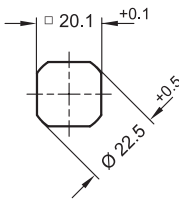


Hook-Type Latches, with Operating Elements GN 115.8
 Hook-Type Latches, Lockable GN 115.8 → Page 1251

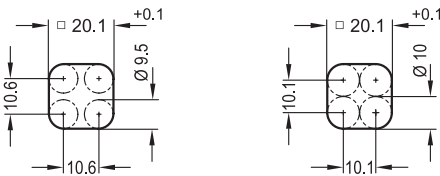
3.1
3.2
3.3

Construction and assembly instructions

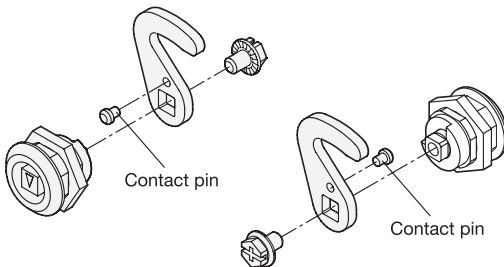
Installation hole for punching or laser machining



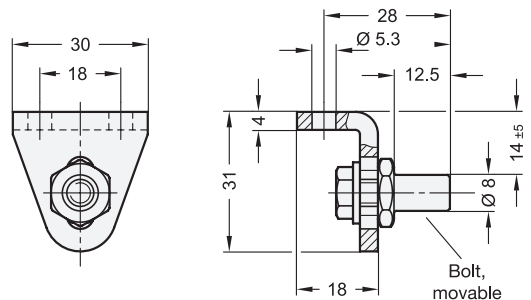
Installation hole for drilling or milling



Assembly latch and hook



Dimensions of the latch bracket



For installation, set a hole in the door, cover or hatch as shown in the outline drawing.

The required installation bore in the door leaf, is usually generated by punching or laser machining in series production.

The installation bore diameter can also be created by drilling or milling as shown in the outline drawings.

For small series and steel sheets below 2 mm thickness, the sheet metal punch GN 123 are the tool of choice → Page 1267.

The hook can only be attached to the latch after installing the lock housing in the door leaf.

The bolt of the latch bracket can be shifted vertically within a slot by ± 5 mm, making it easier to adjust the latch during installation.

Ideally, the bolt should be in the plane of the rotational axis when locked, as shown. A sideways offset of as much as 4 mm does not impair the proper function.

The angle of rotation of the hook is normally limited to 90°. Depending on the mounting of the contact pin supplied loose, the locking action is effected by turning left or right. Without the contact pin, the hook can be rotated by 360°.

3.4
3.5
3.6
3.7
3.8

