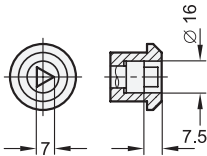
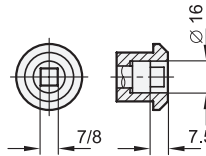


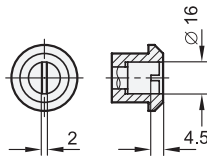
Type DK



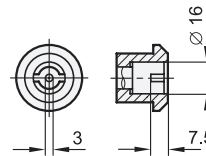
Type VK7 / VK8



Type SCH



Type VDE



- 1 Type**
 - DK With triangle
 - VK7 With square
 - VK8 With square
 - SCH With slot
 - VDE With double bit
- 3 Version of the hook**
 - H1 Pivoting radius R=28
- 5 Identification no.**
 - 1 Without latch bracket
 - 2 With latch bracket

Hook distance A	d	h
18	28	4

* Dimensions of the latch bracket see PDF for „Construction and assembly instructions“

Specification

Lock housing

Zinc die casting

Housing collar

- Chrome plated ● CR
- Powder coated
- Black, RAL 9005, textured finish ● SW

Other parts

Steel
Zinc plated, blue passivated

Protection class IP 65

RoHS

On request

- Hook-type latches with other hook distance A
- Hook with other pivoting radius R

Hook-type latches GN 115.8 with hook and latch bracket are mainly used for sliding doors and flaps. The locking action is in radial direction to the axis of rotation, resulting in a wide variety of different uses. The hook-type latches GN 115.8 are supplied with loosely enclosed hook.

see also...	Page
GN 115.8 Hook-Type Latches (Zinc Die Casting, Operation with Operating Element)	QVX
Construction and assembly instructions	QVX
Overview Latch Types	QVX
IP Protection Classes	QVX

Accessory

GN 119.2 Socket Keys	QVX
GN 120 Protective Caps	QVX
GN 120.1 Opening Handles	QVX

How to order

1	Type
2	Hook distance A
3	Version of the hook
4	Finish housing collar
5	Identification no.

GN 115.8-VDE-18-H1-CR-1

3.1
3.2
3.3
3.4
3.5
3.6
3.7
3.8
3.9
3.10