

3.1

3.2

3.3

3.4

3.5

3.6

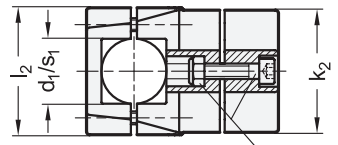
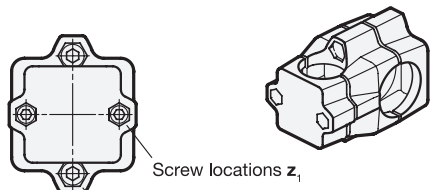
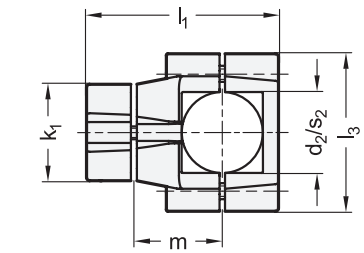
3.7

3.8

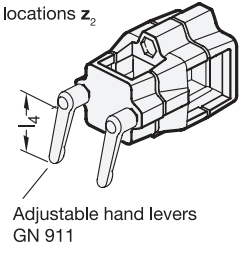
3.9



- 4 Identification no.
- 2 With 4 stainless steel socket cap screws DIN 912



Socket cap screw / hexagon nut



Adjustable hand levers GN 911

- 1
- 1
- 2
- 2
- 3

$d_1$ Bore	$s_1$ Square	$d_2$ Bore	$s_2$ Square	$k_1$ Clamping length	$k_2$ Clamping length	$l_1$	$l_2$	$l_3$	$m$	$z_1$ Screw locations	$z_2$ Screw locations	Accessory Recommended hand lever GN 911			
												for $z_1$ $l_4$	for $z_2$ $l_4$		
B30	V30	B40	V40	60	76	120	79	98	55	M8-50	M10-55	63	78	78	92
B30	V30	B50	V50	60	76	120	79	98	55	M8-50	M10-55	63	78	78	92
B40	V40	B50	V50	60	76	120	79	98	55	M8-50	M10-55	63	78	78	92

Specification

5

- Aluminum
  - Powder coated
  - Black, RAL 9005, textured finish ● SW
  - Plain, matte shot-blasted ○ BL
- Socket cap screws DIN 912  
Stainless steel AISI 304
- Hex nuts DIN 985  
Stainless steel AISI 304  
Self-locking via polyamide ring
- *Stainless Steel Characteristics* → Page 2166
- RoHS

Accessory

- Adjustable Hand Levers GN 911 → Page 1784

On request

- other bore and square combinations  $d_1 / s_1$  and  $d_2 / s_2$

Information

The clamping bores of two-way connector clamps GN 135 are designed for construction tubes GN 990 or DIN 2391, DIN 2395 and DIN 2462.

The square designs are also suitable for use with **profile systems**.

The bores and squares are arranged in such a way that an adaptation between different tube cross-sections is possible.

At the screw locations  $z_1 / z_2$ , the socket cap screws reduce the bore cross-section for clamping.

For clamping without tools, the socket cap screws can be replaced by the adjustable hand levers GN 911 listed in the table as accessories.

see also...

- *Product Family Standard Parts for Profile Systems* → Page 18
- *Construction Tubes GN 990* → Page 1835

How to order

	1 $d_1 (s_1)$
	2 $s_2 (d_2)$
	3 $k_1$
GN 135-B30-V40-60-2-SW	4 Identification no.
	5 Finish