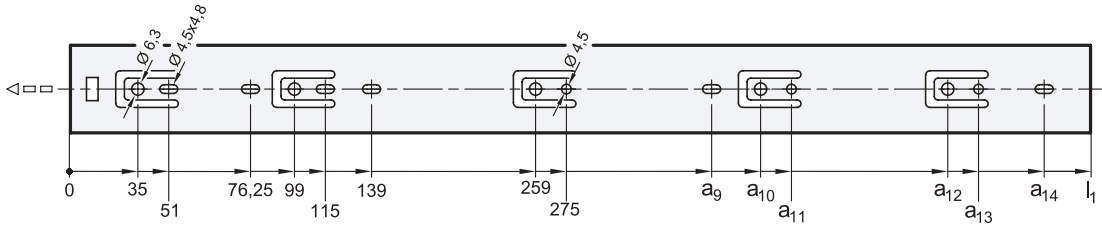
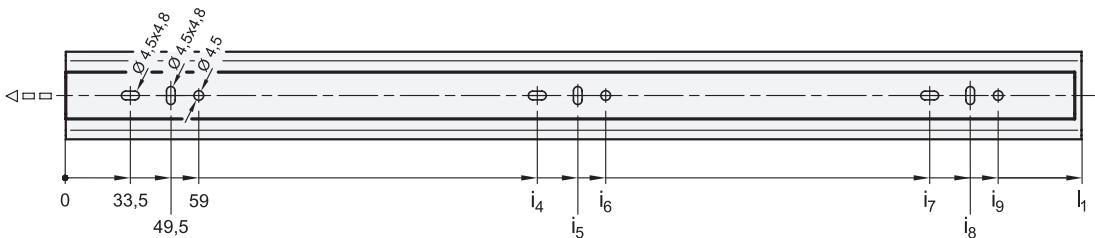


## Mounting holes - outer slide



$l_1$	$a_9$	$a_{10}$	$a_{11}$	$a_{12}$	$a_{13}$	$a_{14}$
300	-	-	-	-	-	-
350	309	-	-	-	-	-
400	-	323	339	-	-	373
450	361,5	387	403	-	-	-
500	361,5	387	403	451	467	-
550	361,5	387	403	451	467	501
600	361,5	387	403	515	531	565

## Mounting holes - inner slide



$l_1$	$i_4$	$i_5$	$i_6$	$i_7$	$i_8$	$i_9$
300	129,5	145,5	155	257,5	273,5	283
350	161,5	177,5	187	289,5	305,5	315
400	193,5	209,5	219	353,5	369,5	379
450	193,5	209,5	219	385,5	401,5	411
500	225,5	241,5	251	449,5	465,5	475
550	257,5	273,5	283	481,5	497,5	507
600	289,5	305,5	315	545,5	561,5	571

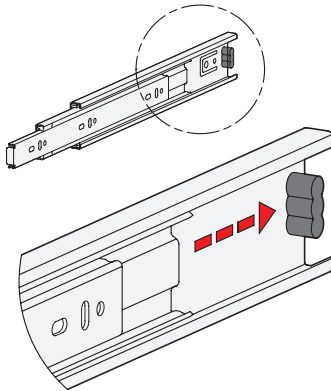
## Fastening screws

For the said loading forces  $F_3$  to be absorbed reliably in the surrounding structure, all available through-holes of the outer and inner slide having a diameter ( $\varnothing$ ) of 4.5 must be used. Alternatively, the outer slide has holes with a diameter ( $\varnothing$ ) of 6.3 for Euro screws. The elongated holes,  $\varnothing 4.5 \times 4.8$ , are used likewise for fastening and facilitate adjustment during mounting when needed. Failure to use fastening screws reduces the specified load capacity accordingly. The following screws can be used for mounting:

Designation - standard		Outer slide	Inner slide
Hexagon socket button head screw	ISO 7380	M 4	M 4
Pan head screw, Phillips	ISO 7045	M 4	M 4
Pan head tapping screw, Phillips	ISO 7049	ST 3,9 / 4,2	ST 3,9 / 4,2



## Rubber stop, locking device in back

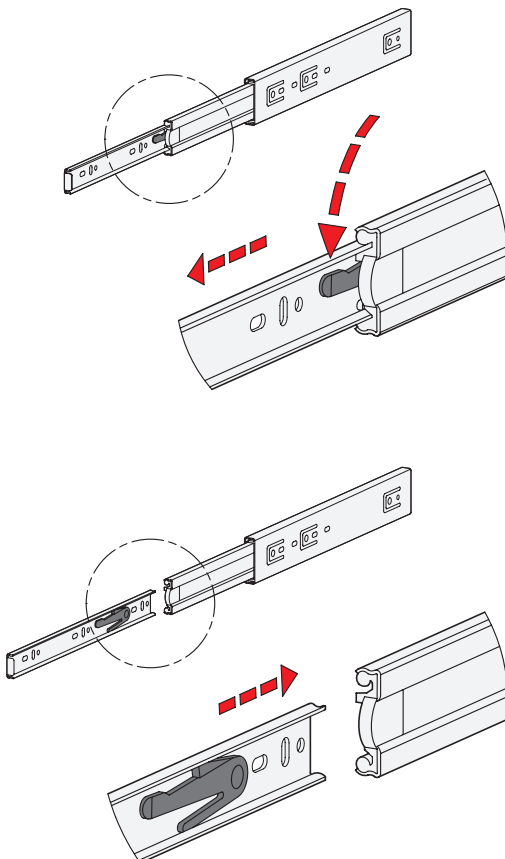


The rubber stops of type F dampen the impact of the slide in the respective end position. This feature minimizes noise development and increases the lifespan. Attached to the slides in a partially concealed, partially visible manner, the stops meet each of the requirements in regard to shape, material, and hardness.

The rubber stop takes on also a locking function in the back stop position. This feature is noticeable through a slight resistance on opening and closing the slide.

If larger static or dynamic loads occur in the direction of extension, they should be absorbed by external stop elements.

## Detach function



Type F has additionally a detach function through which the extension slides can be completely separated from one another in the area of the middle and inner slide. This feature not only facilitates mounting. It also allows the extension to be quickly removed, for example, when frequent maintenance work is performed on the components located behind.

The telescopic slide can be quickly and easily detached in the extracted position through activation of the release lever, allowing the inner slide to be removed from the front.

For reattaching the slides, the ball cages need to be moved to the front end position. Then the inner slide is inserted to the back end stop where it locks into place automatically.

The protected arrangement of the release mechanism prevents accidental detachment of the slide.