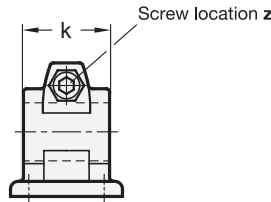
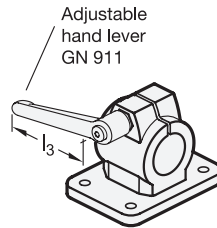
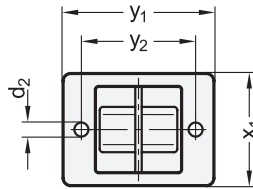
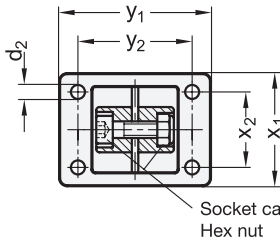
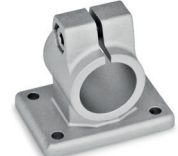
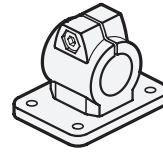


GN 146



GN 146.3



- 3 Identification no.**
2 With stainless steel socket cap screw DIN 912



d_1 Bore		k Clamping length	d_2	l_1	l_2	m	t	x_1	x_2	y_1	y_2	z Screw location	Accessory Recom. hand lever for z l_3	
GN 146	GN 146.3													
B 20	B 20	40	6,5	62	40	30	7	52	35	70	53	M8-25	-	-
B 25	B 25	40	6,5	62	40	30	7	52	35	70	53	M8-25	63	78
B 30	B 30	40	6,5	62	40	30	7	52	35	70	53	M8-25	63	78
B 30	B 30	56	8,5	83	56	42	10	78	52	108	82	M10-35	-	-
B 32	B 32	56	8,5	83	56	42	10	78	52	108	82	M10-35	-	-
B 35	B 35	56	8,5	83	56	42	10	78	52	108	82	M10-35	92	-
B 40	B 40	56	8,5	83	56	42	10	78	52	108	82	M10-35	78	92
B 40	-	65	11	95	65	50	14	92	62	128	98	M10-50	-	-
B 42	-	65	11	95	65	50	14	92	62	128	98	M10-50	-	-
B 45	-	65	11	95	65	50	14	92	62	128	98	M10-50	78	92
B 48	-	65	11	95	65	50	14	92	62	128	98	M10-50	78	92
B 50	-	65	11	95	65	50	14	92	62	128	98	M10-50	78	92
B 50	-	80	11	112	80	60	14	110	74	154	118	M10-50	-	-
B 60	-	80	11	112	80	60	14	110	74	154	118	M10-50	78	92

Specification

- Aluminum
 - Powder coated
 - Black, RAL 9005, textured finish ● **SW**
 - Plain, matte shot-blasted ○ **BL**
- Socket cap screws DIN 912
Stainless steel AISI 304
- Hex nuts DIN 985
Stainless steel AISI 304
Self-locking via polyamide ring
- Stainless Steel Characteristics → Page 2166
- RoHS

Accessory

- Adjustable Hand Levers GN 911 → Page 1784



Information

The clamping bore of flanged connector clamps GN 146 / GN 146.3 is mechanically machined and designed for construction tubes GN 990 or DIN 2391, DIN 2395 and DIN 2462.

Flanged connector clamps GN 146.3 can also be mounted to **profile systems**.

At the screw location z , the socket cap screw reduces the bore cross-section for clamping.

For clamping without tools, the socket cap screw can be replaced by an adjustable hand lever GN 911 listed in the table as accessory.

see also...

- Construction Tubes GN 990 → Page 1835

How to order	
1	d_1
2	k
3	Identification no.
4	Finish

GN 146-B30-56-2-BL