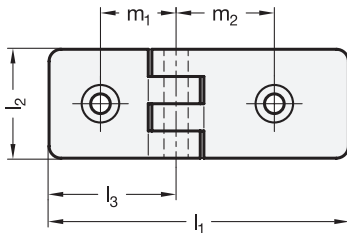
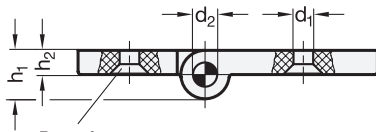
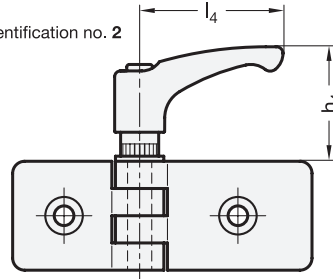


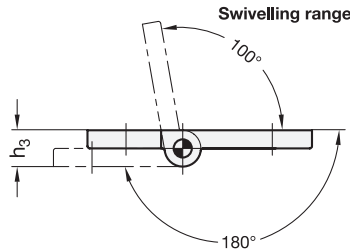
Identification no. 1



Identification no. 2



Bores for countersunk screw
DIN 7991-M6




Original design CFG./CFG-ERS



5 Identification no.

- 1 Without safety hand levers
- 2 With safety hand levers

1

2

3

l_1	m_1	m_2	d_1	d_2	h_1	h_2	h_3	h_4	l_2	l_3	l_4	For slot width $s_1 - s_2$		
	Nominal dimension	Actual dimension	Nominal dimension	Actual dimension										
54	17	17,5	17	17,5	6,5	8	16	8	16	38	36	27	44	30 - 30
64	17	17,5	22	22,5	6,5	8	16	8	16	38	36	27	44	30 - 40
69	17	17,5	25	25	6,5	8	16	8	16	38	36	27	44	30 - 45
84	17	17,5	32	32,5	6,5	8	16	8	16	38	36	27	44	30 - 60
74	22	22,5	22	22,5	6,5	8	16	8	16	38	36	37	44	40 - 40
79	22	22,5	25	25	6,5	8	16	8	16	38	36	37	44	40 - 45
94	22	22,5	32	32,5	6,5	8	16	8	16	38	36	37	44	40 - 60
84	25	25	25	25	6,5	8	16	8	16	16	36	42	44	45 - 45
99	25	25	32	32,5	6,5	8	16	8	16	38	36	42	44	45 - 60
114	32	32,5	32	32,5	6,5	8	16	8	16	38	36	57	44	60 - 60

Specification

• Plastic (Polyamide PA)

- Black, matte finish
- Gray, matte finish
- Temperature resistant up to 130 °C



• Pin

Steel nickel plated

• Safety hand levers GN 604.2

- Plastic (Polyamide PA)
- Black, matte finish
- Washer
- Steel, zinc plated

• Load Rating Information → Page 2126

• Plastic Characteristics → Page 2158

• RoHS

Information

Hinges GN 159 are suitable for simple installation on standard commercially available extrusions to support the weight of a door by utilising the enclosed rectangular positioning elements. These are simply clipped into recesses in the hinge wings.

For every profile combination $s_1 - s_2$, the positioning elements in the commercial groove widths b are included.

Assembly sets GN 965 / GN 968 are used for the assembly on profile rails.

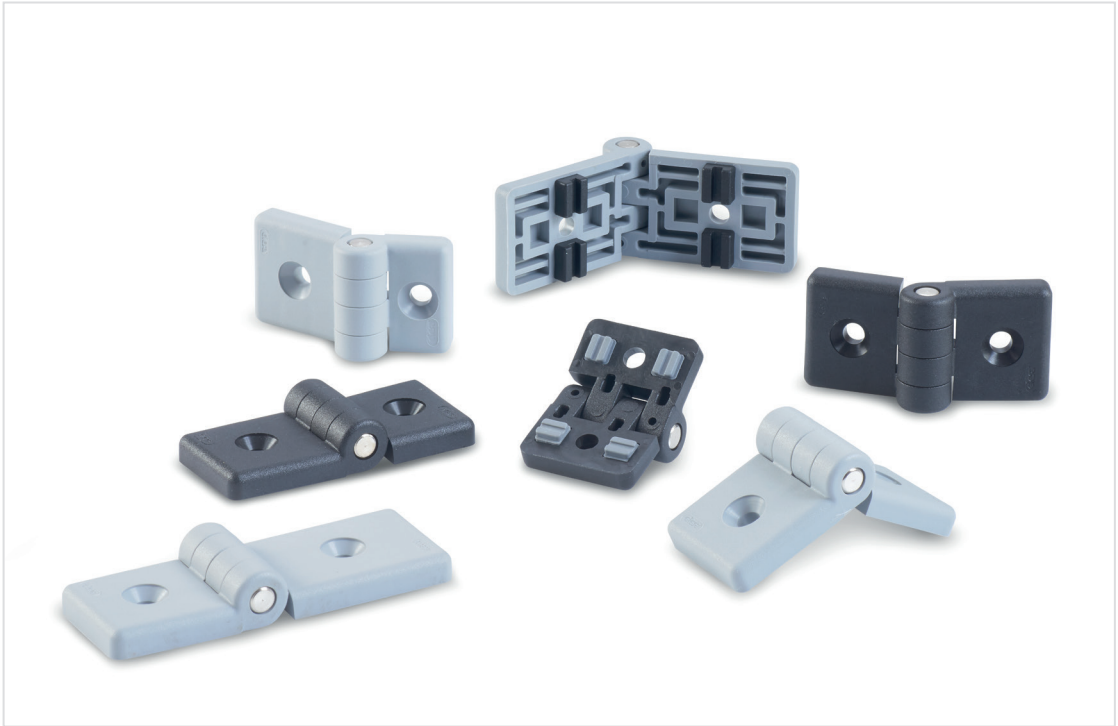
see also...

- *Product Family Standard Parts for Profile Systems* → Page 18
- *List of Hinge Types* → Page 1284 ff.
- *Double Hinges GN 159.1 (for Profile Systems)* → Page 1322

How to order

1	l_1
2	m_1
3	m_2
4	Color
5	Identification no.

GN 159-84-17-32-SW-1



3.1

3.2

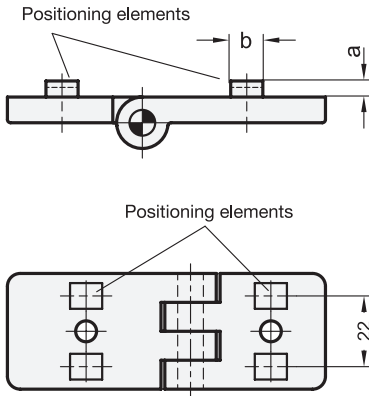
3.3

3.4

3.5

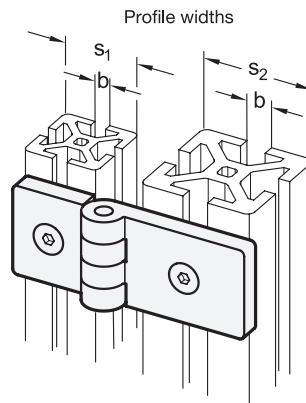
Positioning elements

Application example



3.6

3.7



3.8

Profile width	b Nut width	a
30	6	2
30	8	2
40 and 45	8	4
40 and 45	10	4
60	10	5
60	12	5

3.9

The positioning elements are clipped into the corresponding recesses of the hinge wing.

