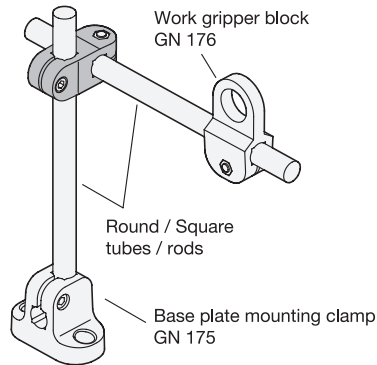
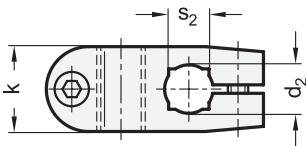


Application example



1

2

d ₁ Bore	d ₂ Bore	k	Length l	m	s ₁ Square	s ₂ Square
B 10	B 10	21	52	17	V 8	V 8
B 12	B 12	21	52	17	V 10	V 10
B 14	B 14	21	52	17	V 12	V 12

Specification

- Plastic
Technopolymer (Polyamide)
- Glass fiber reinforced
- Temperature resistant up to 60 °C
- Black, matte finish
- Socket cap screws DIN 912
Stainless steel AISI 304
- Hexagon nuts ISO 4032
Stainless steel AISI 304
- *Plastic Characteristics* → Page 2158
- *Stainless Steel Characteristics* → Page 2166
- RoHS

Information

see also...

- *Two-Way Mounting Clamps GN 474 (Aluminum)* → Page 1791
- *Retaining Rods / Retaining Tubes GN 480.1* → Page 1833
- *Base Plate Mounting Clamps GN 175* → Page 1807

How to order

GN 174-B10-B10

1 d₁
2 d₂