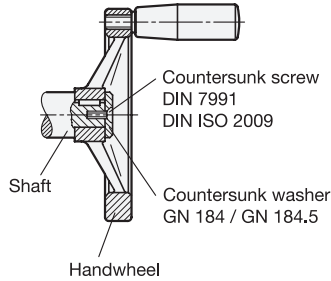
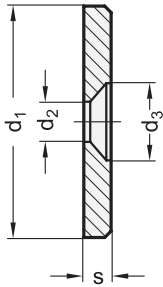


Application example:  
Mounting  
of a handwheel  
with keyway  
on a shaft



d <sub>1</sub>	d <sub>2</sub>	d <sub>3</sub>	s	Countersunk screws DIN 7991 DIN ISO 2009
12	3,2	6,5	2,5	M 3
16	4,3	8,5	3	M 4
20	4,3	8,5	3	M 4
22	5,3	10,3	3,5	M 5
25	5,3	10,3	3,5	M 5
28	5,3	10,3	3,5	M 5
32	6,4	12,3	4	M 6
36	6,4	12,3	4	M 6
40	6,4	12,3	5	M 6
45	6,4	12,3	6	M 6
52	6,4	12,3	6	M 6

**Specification**

**GN 184**

**Steel**

- Turned
- Blackened
- Zinc plated, blue passivated



—  
**ZB**

**GN 184.5**

**Stainless steel AISI 303**

- Turned
- Matte shot-blasted

RoHS

Countersunk washers GN 184 / GN 184.5 are retained to the face of the shaft end with a countersunk head screw DIN ISO 2009 or DIN 7991 forming a clean-look end cap.

A typical application is the retention of handwheels with hub keyed to the shaft.

How to order (Steel, blackened)

**GN 184-28**

1 d<sub>1</sub>

How to order (Steel, zinc plated)

**GN 184-36-ZB**

1 d<sub>1</sub>  
2 Finish

How to order (Stainless steel)

**GN 184.5-36**

1 d<sub>1</sub>