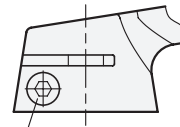


With clamping



Dowel pin
ISO 4762
M_A see table

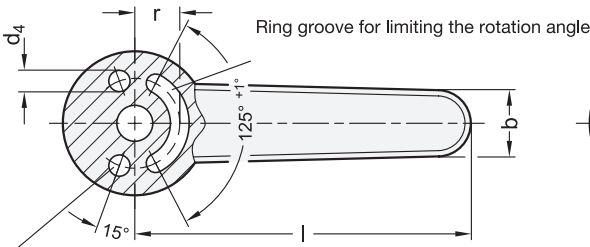


2 Bore code

- B** Without keyway, without clamping
- BK** Without keyway, with clamping
- K** With keyway, without clamping
- KK** With keyway, with clamping
- V** With double square, without clamping
- VK** With double square, with clamping

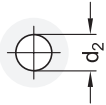
4 Coding (cap)

- N** Plain



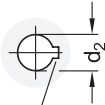
Bore for spring plungers
GN 614

B / BK



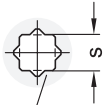
Bore code

K / KK



Keyway

V / VK



Square driver DIN 79

1

3

3

d₁	d₂ H7 B / BK / K / KK	s H11 V / VK	b	d₃ +0,2	d₄	d₅	h₁ -0,2	h₂	h₃	Length l	r	t	M_A max. in Nm		
32	8	10	8	10	15	4,2	4	18,8	14,9	3,4	36	91,5	10	6	2,9
40	10	12	10	12	18,5	5,2	5	23,6	19,1	2,8	44	114	12,5	7,5	5,7
50	12	14	12	14	23	6,2	6	30,5	23,6	4	55	142	16	9	10

1.1 1.2 1.3 1.4 2.1 2.2 2.3 2.4





Specification

5

6

Handle

- Zinc die casting
- Powder coated
 - Silver, RAL 9006, textured finish
 - Black, RAL 9005, textured finish
- Keyway DIN 6885-1
 - P9 for type K
 - JS9 for type KK

ZD

- SR
- SW

Cap

- Plastic, polyamide (PA)
- Removable
- Gray for SR
- Black for SW

Socket cap screw ISO 4762

for bore code BK / KK / VK
Stainless steel

RoHS

Technical Information

Page

Technical Instructions	QVX
Keyways DIN 6885-1	QVX
Squares DIN 79	QVX
ISO Fundamental Tolerances	QVX
Plastic Characteristics	QVX

Gear levers GN 210 are used to drive shafts, such as for switching gears and engaging clutches or operating valves and latches.

The torque is transmitted through a positive connection either via a parallel key or a square drive. This ensures a defined angular position between the shaft and the handle. The angular position can be freely defined using gear levers with smooth bore.

Gear levers with parallel key or square drive can be secured axially with a countersunk washer. The versions with clamping transmit torques and forces with zero backlash via frictional locking and secure the hub axially. They are easy to install and allow for subsequent adjustment.

The rotational angle of the gear levers can be held with spring plungers or limited with dowel pins. An application-specific rotational angle can be defined by using two dowel pins.

see also...

	Page
GN 211 Control Levers (Steel)	QVX
GN 750 Control Levers (Steel)	QVX
GN 623 Gear Levers (Plastic, Bushing Steel)	QVX
GN 623.5 Gear Levers (Plastic, Bushing Stainless Steel)	QVX

Accessory

DIN 6885 Parallel Keys	QVX
GN 184 GN 184.5 Countersunk Washers	QVX
GN 614 Spring Plungers	QVX

How to order

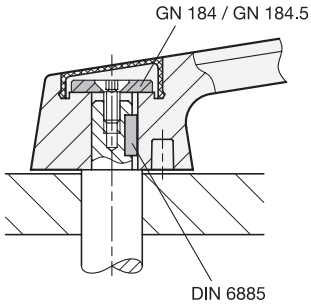
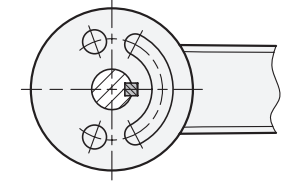
1	d ₁
2	Bore code
3	d ₂ (s)
4	Coding (Cap)
5	Material
6	Finish

1 2 3 4 5 6
GN 210-40-BK10-N-ZD-SR

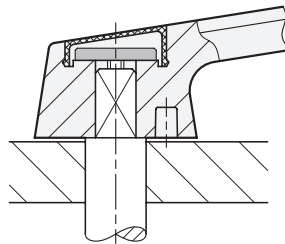
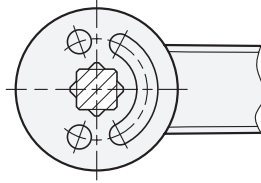
Technical Instructions

Fastening and torque transmission

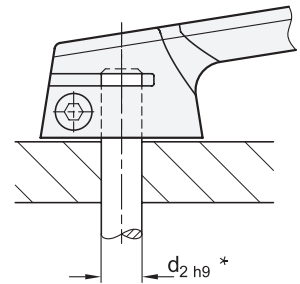
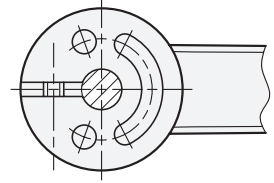
Countersunk washer and parallel key



Countersunk washer and square driver



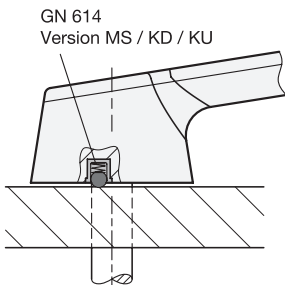
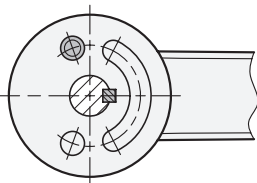
With clamping



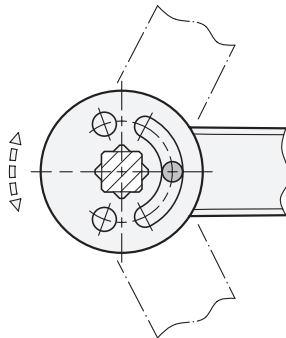
* recommended diameter tolerance

Holding / rotation limiting

Spring plunger



Dowel pin in ring groove



Two dowel pins in ring groove

